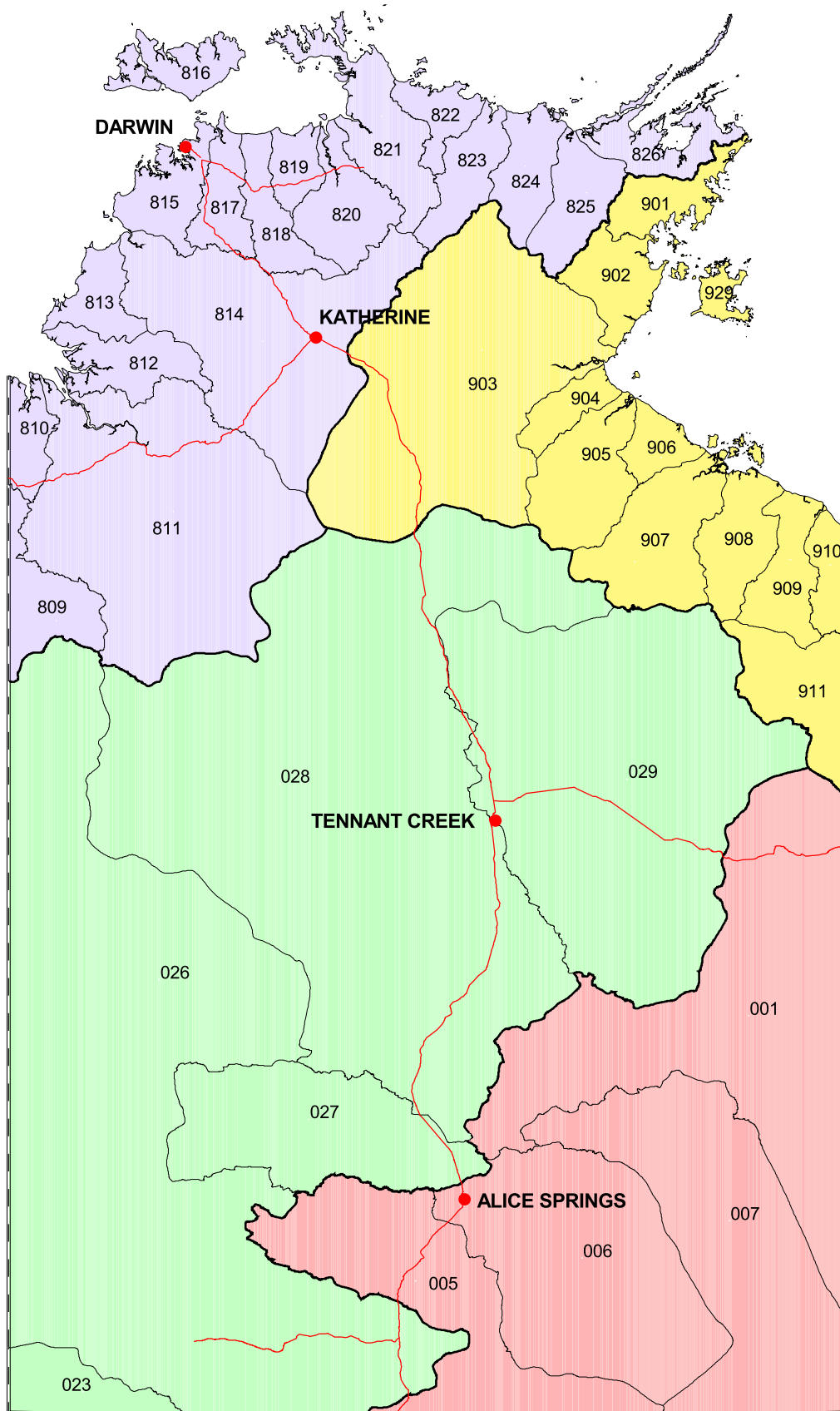




CATCHMENT OVERVIEW MAP SERIES

This document displays the following map series for the report,
*Daly River Catchment, Part 1 - An Assessment of the Physical
and Ecological Condition of the Daly River and its Major
Tributaries*

- Map 1 NT Drainage Divisions and Basins as defined by the Australian Water Resources Council
- Map 2 Locality Plan and Dry Season Flows
- Map 3 Landform
- Map 4 Vegetation and Important Wetlands
- Map 5 Land Tenure and Land Use
- Map 6 Major Sub-catchments
- Map 7 Sub-sections
- Map 8 Stream Orders
- Map 9 Location of Sites



DRAINAGE DIVISIONS



LAKE EYRE

- 001 Georgina River
- 005 Finke River
- 006 Todd River
- 007 Hay River



WESTERN PLATEAU

- 023 Warburton
- 026 Mackay
- 027 Burt
- 028 Wiso
- 029 Barkly



TIMOR SEA

- 809 Ord River
- 810 Keep River
- * 811 Victoria River
- 812 Fitzmaurice River
- 813 Moyle River
- * 814 Daly River
- 815 Finnis River
- 816 Bathurst & Melville Islands
- 817 Adelaide River
- 818 Mary River
- 819 Wildman River
- 820 South Alligator River
- 821 East Alligator River
- 822 Goomadeer River
- 823 Liverpool River
- 824 Blyth River
- 825 Goyder River
- 826 Buckingham River



GULF OF CARPENTARIA

- 901 Koolatong River
- 902 Walker River
- 903 Roper River
- 904 Towns River
- 905 Limmen Bight River
- 906 Rosie River
- 907 McArthur River
- 908 Robinson River
- 909 Calvert River
- 910 Settlement River
- 911 Nicholson River
- 929 Grooyte Eylandt

— Division Boundary

— Basin Boundary

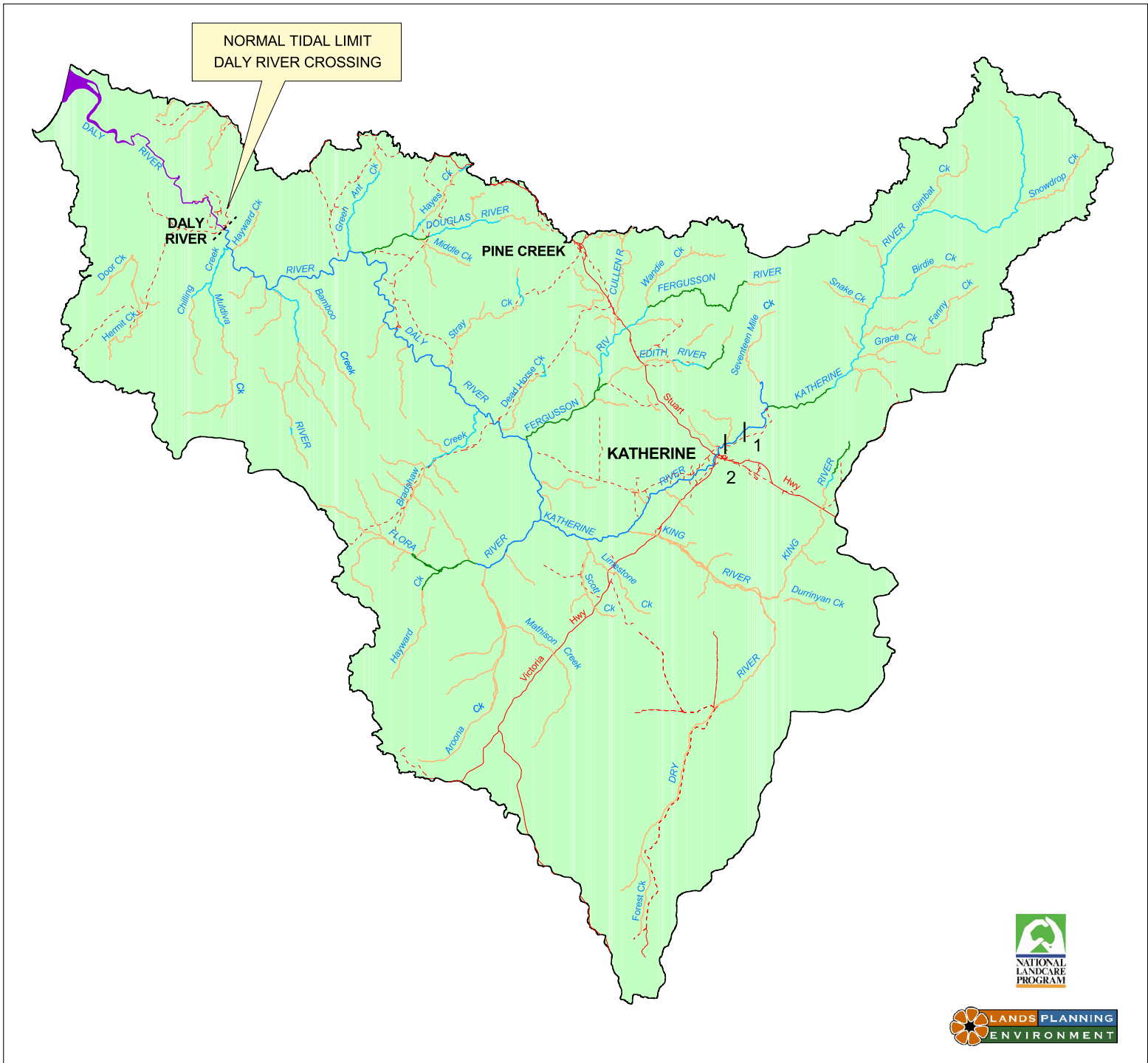


* Baseline data collected for Top End Waterways Project (1995 - 1997)



NT DRAINAGE DIVISIONS AND BASINS

as defined by the Australian Water Resources Council

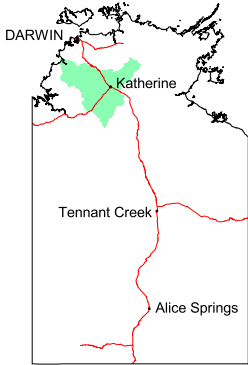


DRY SEASON FLOW REGIME

- Permanent Flow >100 L/s (high)
- Permanent Flow 10 - 100 L/s (medium)
- Permanent Pools and Flow <10 L/s (low)
- Dry (ephemeral)
- Tidal

LEGEND

- Catchment Boundary
- Major Road
- - - Minor Road
- | Weir
 1. Donkey Camp Weir
 2. Knotts Crossing Weir

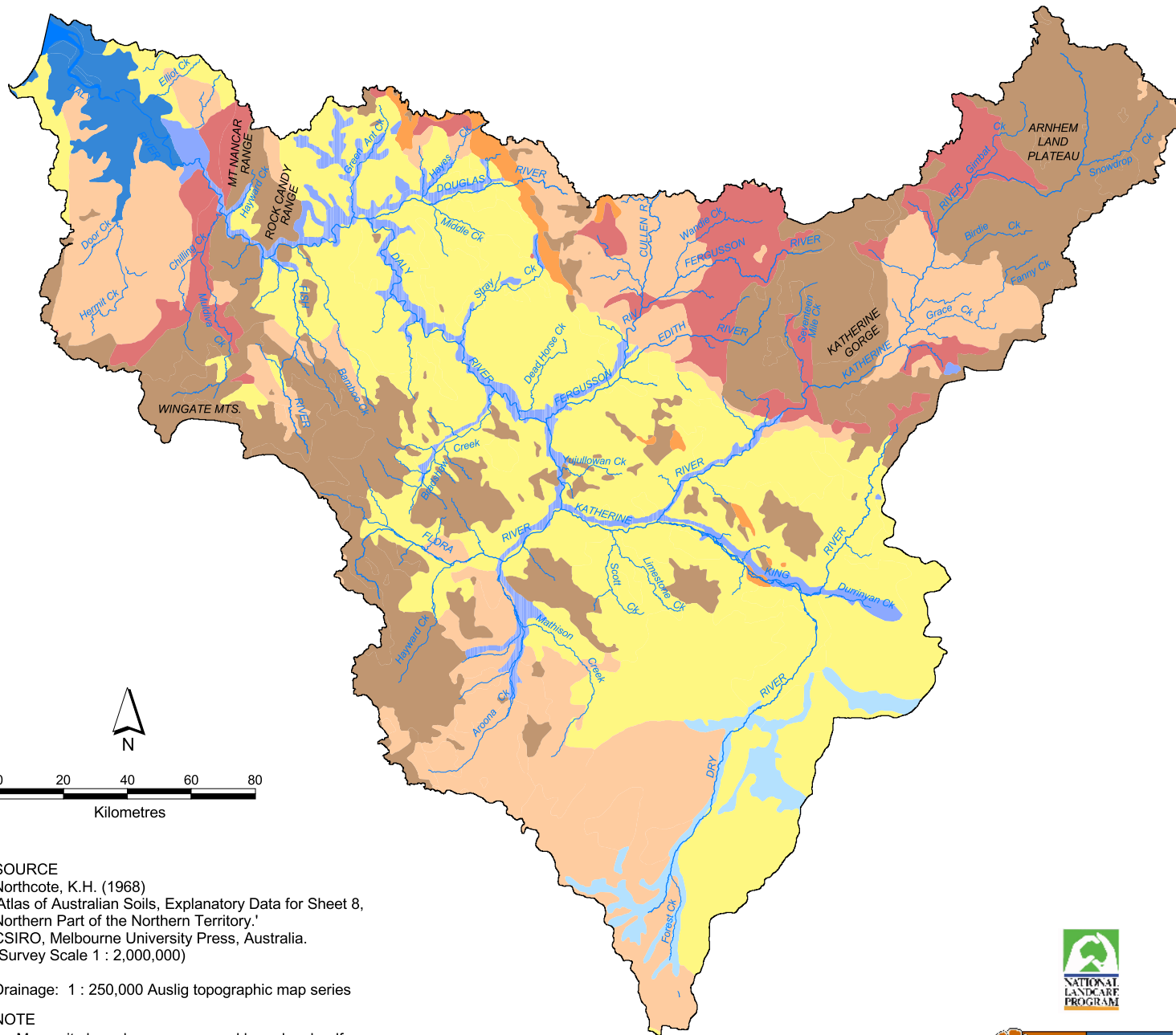


CATCHMENT LOCATION



TOP END WATERWAYS PROJECT
DALY RIVER CATCHMENT

LOCALITY PLAN AND DRY SEASON FLOWS



SOURCE
 Northcote, K.H. (1968)
 'Atlas of Australian Soils, Explanatory Data for Sheet 8,
 Northern Part of the Northern Territory.'
 CSIRO, Melbourne University Press, Australia.
 (Survey Scale 1 : 2,000,000)

Drainage: 1 : 250,000 Auslig topographic map series

NOTE

1. Map units have been re-grouped based on landform
2. The soil survey does not fully align with the drainage due to the difference in original mapping scales

LANDFORM DESCRIPTION

- Undulating plains to hilly country with isolated mesas and buttes (Map units AC13, CC56, If4, Mo23, Mo24, My68, SQ1, Wd12, Wd13)
- Plateaus, mesas, buttes, plateau escarpments and adjacent rough rocky hills (Map units AB33, BA6, BA7, JV1, JV2, My83)
- Hilly to steep hilly ranges and strike ridges (Map units LK22, LK23, Mw33, Tb134)
- Flat to undulating terrain (Map units JV3, MJ1, Mt4, Mt5, My67, My70, My71, My72, My73, My74, My79, Wd11)
- Low to steep hills, ridges and cuestas with areas of bouldery outcrop (Map units JJ28, OO4)
- Floodplains and back plains, adjacent sideslopes and stony rises, levees, billabongs and channels (Map units Mb15, OO1, OO2, OO3, OO8)
- Flat to gently undulating plains with either narrow drainage or broad shallow valleys (Map units I15, I18)
- Seasonally flooded coastal plains and adjacent sand dunes (Map units Jw1, NN3, NN5)

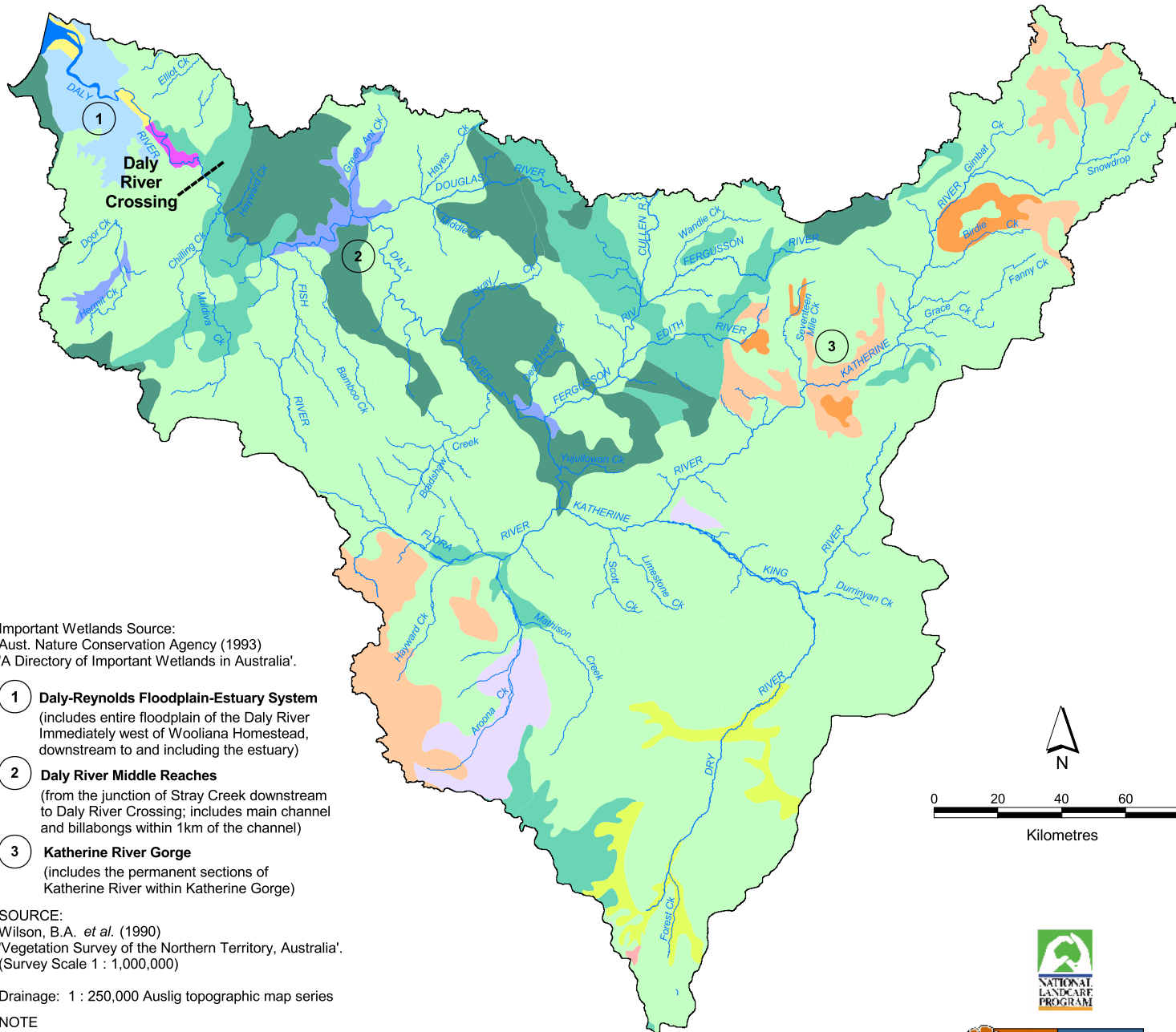
LEGEND

- Catchment Boundary
- River
- Creek



TOP END WATERWAYS PROJECT
DALRYMPLER RIVER CATCHMENT

LANDFORM
(Broad scale mapping)



Important Wetlands Source:
 Aust. Nature Conservation Agency (1993)
 'A Directory of Important Wetlands in Australia'.

- 1 **Daly-Reynolds Floodplain-Estuary System**
 (includes entire floodplain of the Daly River immediately west of Wooliana Homestead, downstream to and including the estuary)
- 2 **Daly River Middle Reaches**
 (from the junction of Stray Creek downstream to Daly River Crossing; includes main channel and billabongs within 1km of the channel)
- 3 **Katherine River Gorge**
 (includes the permanent sections of Katherine River within Katherine Gorge)

SOURCE:
 Wilson, B.A. *et al.* (1990)
 'Vegetation Survey of the Northern Territory, Australia'.
 (Survey Scale 1 : 1,000,000)

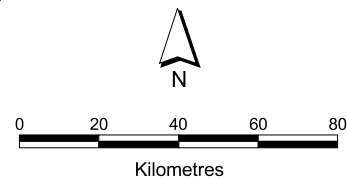
Drainage: 1 : 250,000 Auslig topographic map series

NOTE

- 1. Vegetation categories have been re-grouped
- 2. The vegetation survey does not fully align with the drainage due to the difference in original mapping scales

VEGETATION DESCRIPTION

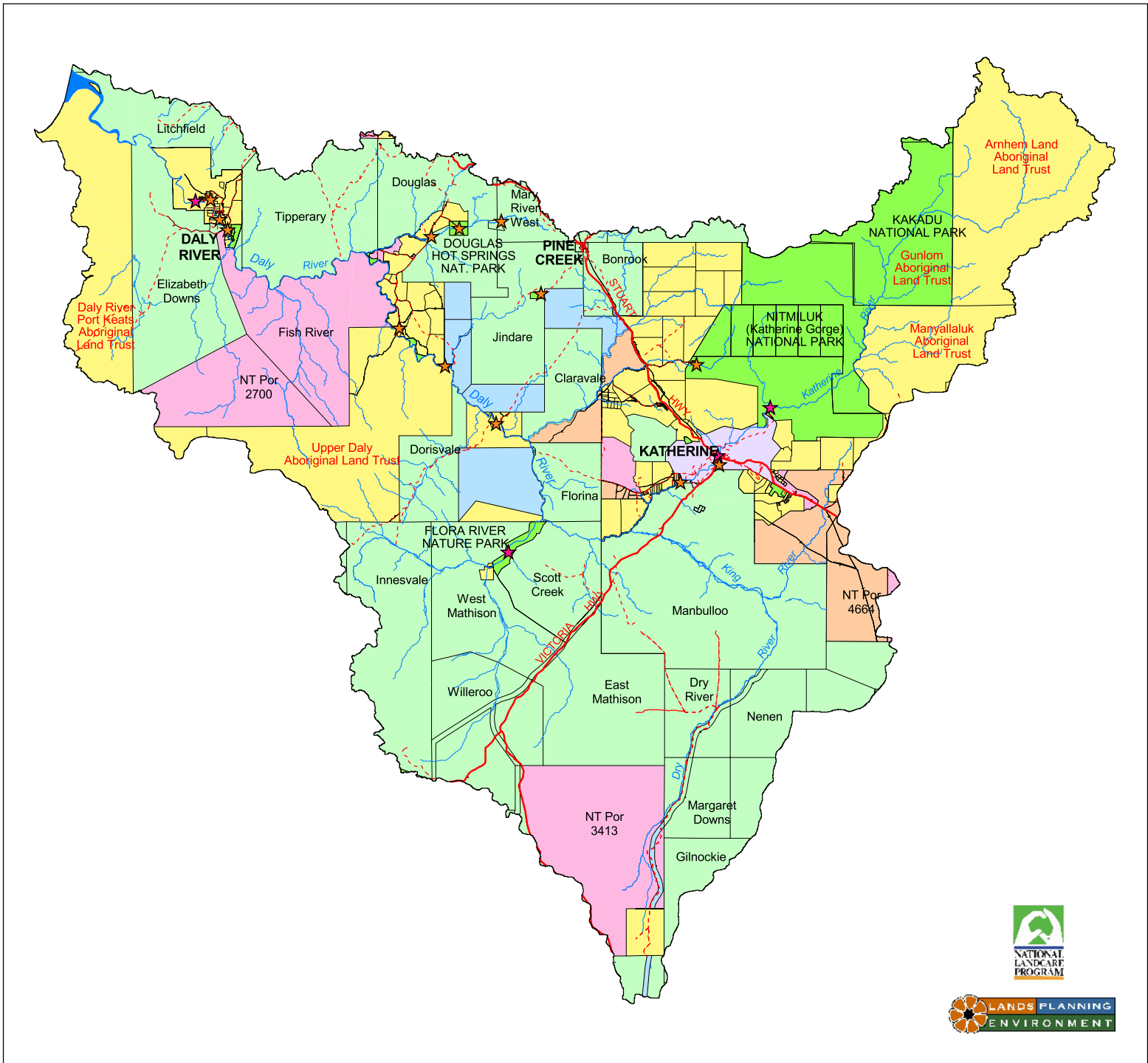
- CLOSED - FOREST**
 Mixed species closed-forest
 (Monsoon vine forest thicket)
- EUCALYPT WITH GRASS UNDERSTOREY**
Open - Forest
E. miniata, *E. tetradonta* with *Sorghum*
 grassland understorey
- Woodland**
E. bleeseri, *E. dichromophloia*, *E. ferruginea*,
E. latifolia, *E. miniata*, *E. papuana*, *E. patellaris*,
E. polycarpa, *E. tectifica*, *E. tetradonta*, *E. terminalis*
 Grassland understorey
Chrysopogon fallax, *Sehima nervosum*,
Plectrachne pungens, *Sorghum*
- Low Woodland**
E. chlorophylla, *E. dichromophloia*, *E. microtheca*,
E. terminalis, *E. tintinnans*, *Excoecaria parvifolia*,
E. pruinosa
 Grassland understorey
Eulalia aurea, *Dichanthium*, *Chrysopogon fallax*,
Sehima nervosum, *Plectrachne pungens*, *Sorghum*
- Low Open - Woodland**
E. microtheca with *Eulalia aurea*, *Dichanthium*
 grassland understorey
- EUCALYPT WITH HUMMOCK GRASS UNDERSTOREY**
Low Woodland
E. phoenicia with *Plectrachne pungens* hummock
 grassland understorey
- Low - Open Woodland**
E. brevifolia, *E. dichromophloia*, *E. miniata* with
Plectrachne pungens hummock grassland
 understorey
- MIXED SPECIES LOW OPEN-WOODLAND WITH GRASS UNDERSTOREY**
E. pruinosa, *Lysiphillum cunninghamii*, *Terminalia*
arostrata, with *Eulalia aurea*, *Dichanthium*,
Chrysopogon fallax, *Sehima nervosum*
 grassland understorey
- MELALEUCA**
M. viridiflora, *Eucalyptus* low open - woodland with
Chrysopogon fallax grassland understorey
- FLOODPLAINS**
 Mixed closed - grassland / sedgeland (Seasonal
 Floodplain)
- ACACIA WITH GRASS UNDERSTOREY**
A. shirleyi open - forest with open - grassland
 understorey
- LITTORAL**
 Mangal low - closed forest (Mangroves); saline tidal
 flats with scattered chenopod low shrubland



TOP END WATERWAYS PROJECT
 DALY RIVER CATCHMENT

**VEGETATION AND
 IMPORTANT WETLANDS**









(Broad scale mapping) Map 4



LAND CLASSIFICATION

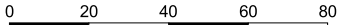
-  Katherine Municipal Boundary
-  National Park or Reserve
-  Pastoral Lease
-  Vacant Crown Land
-  Private Freehold
-  Crown Lease Term
-  Crown Lease Perpetual

LEGEND

-  Public Recreation Area and Boat Ramp
-  Public Recreation Area
-  Catchment Boundary
-  Cadastral Boundary
-  Major Road
-  Minor Road
-  River
-  Creek

NOTE

In general, where waterways form property boundaries the bed and banks of the waterway separating such properties is classified as Crown land. Where a waterway lies within a property the bed and banks of the waterway belong to the property owners but the water rights over such waterways belong to the Crown.

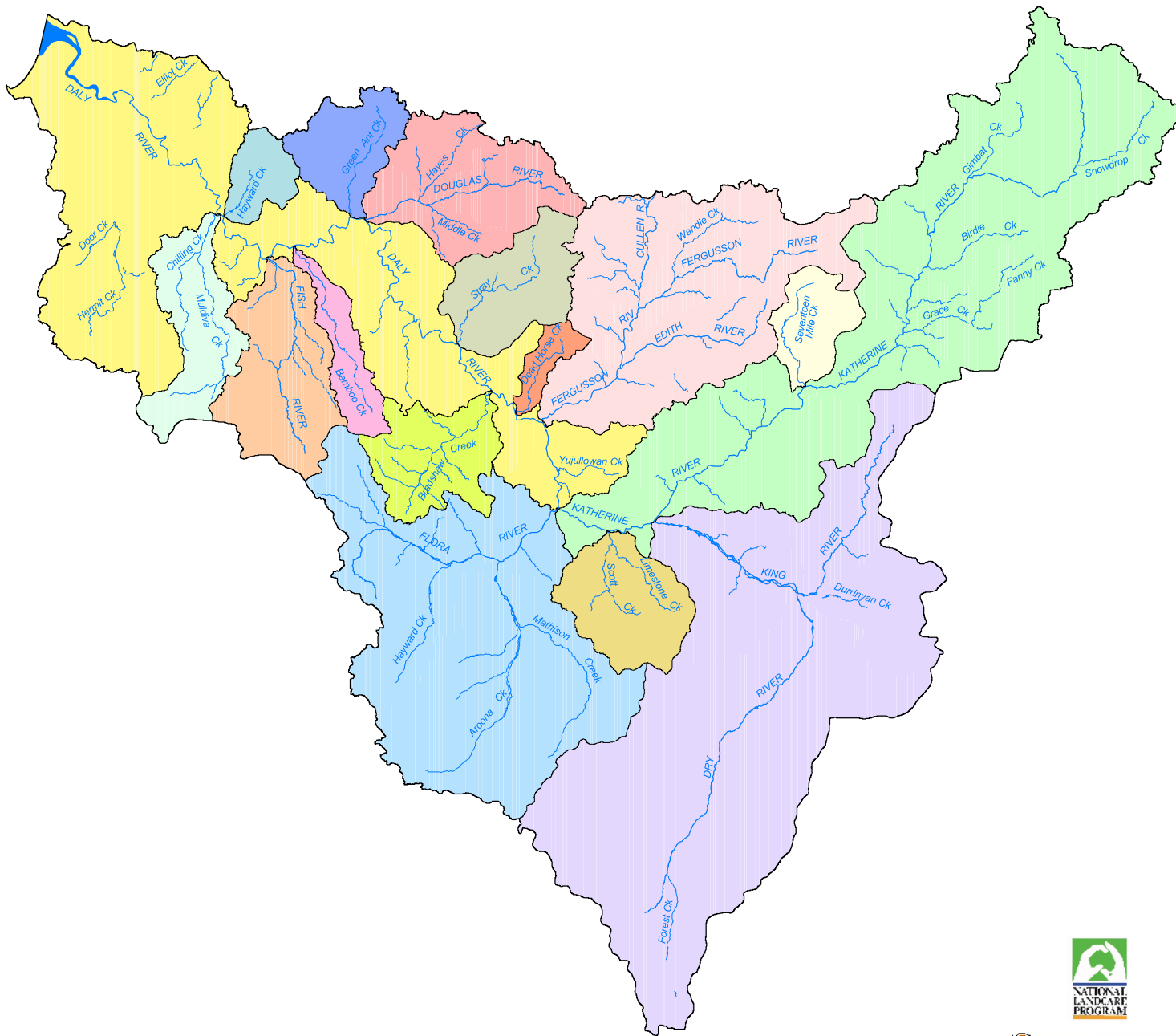


Kilometres



TOP END WATERWAYS PROJECT
DALY RIVER CATCHMENT





LAND TENURE AND LAND USE



MAJOR SUB-CATCHMENTS

-  Daly River
-  Chilling Creek
-  Hayward Creek
-  Fish River
-  Bamboo (Moon Boon) Creek
-  Green Ant Creek
-  Douglas River
-  Stray Creek
-  Bradshaw Creek
-  Dead Horse Creek
-  Fergusson River
-  Flora River
-  Katherine River
-  Limestone Creek
-  King and Dry Rivers
-  Seventeen Mile Creek

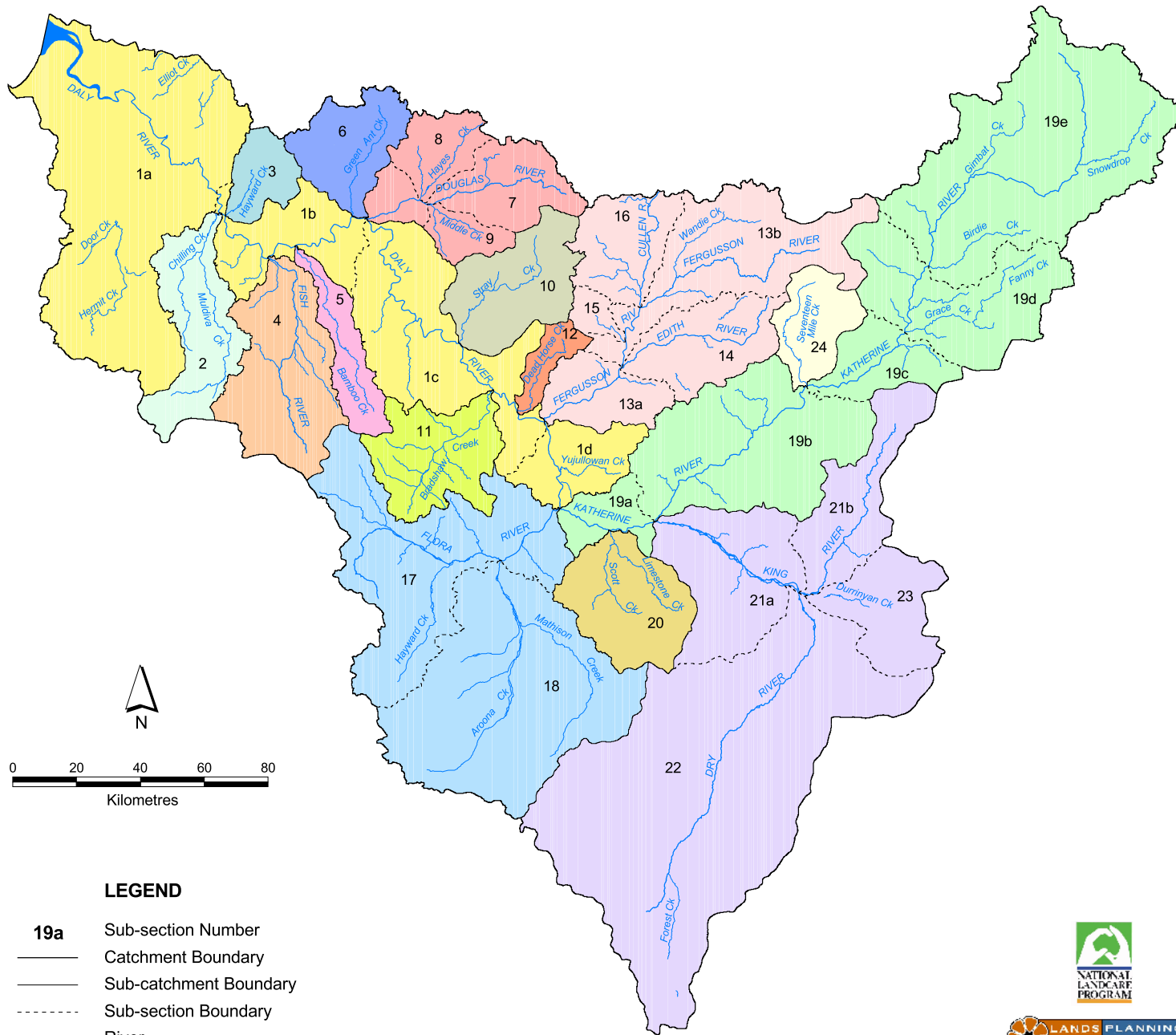
LEGEND

-  Catchment Boundary
-  Sub-catchment Boundary
-  River
-  Creek



 TOP END WATERWAYS PROJECT
DALY RIVER CATCHMENT

MAJOR SUB-CATCHMENTS



LEGEND

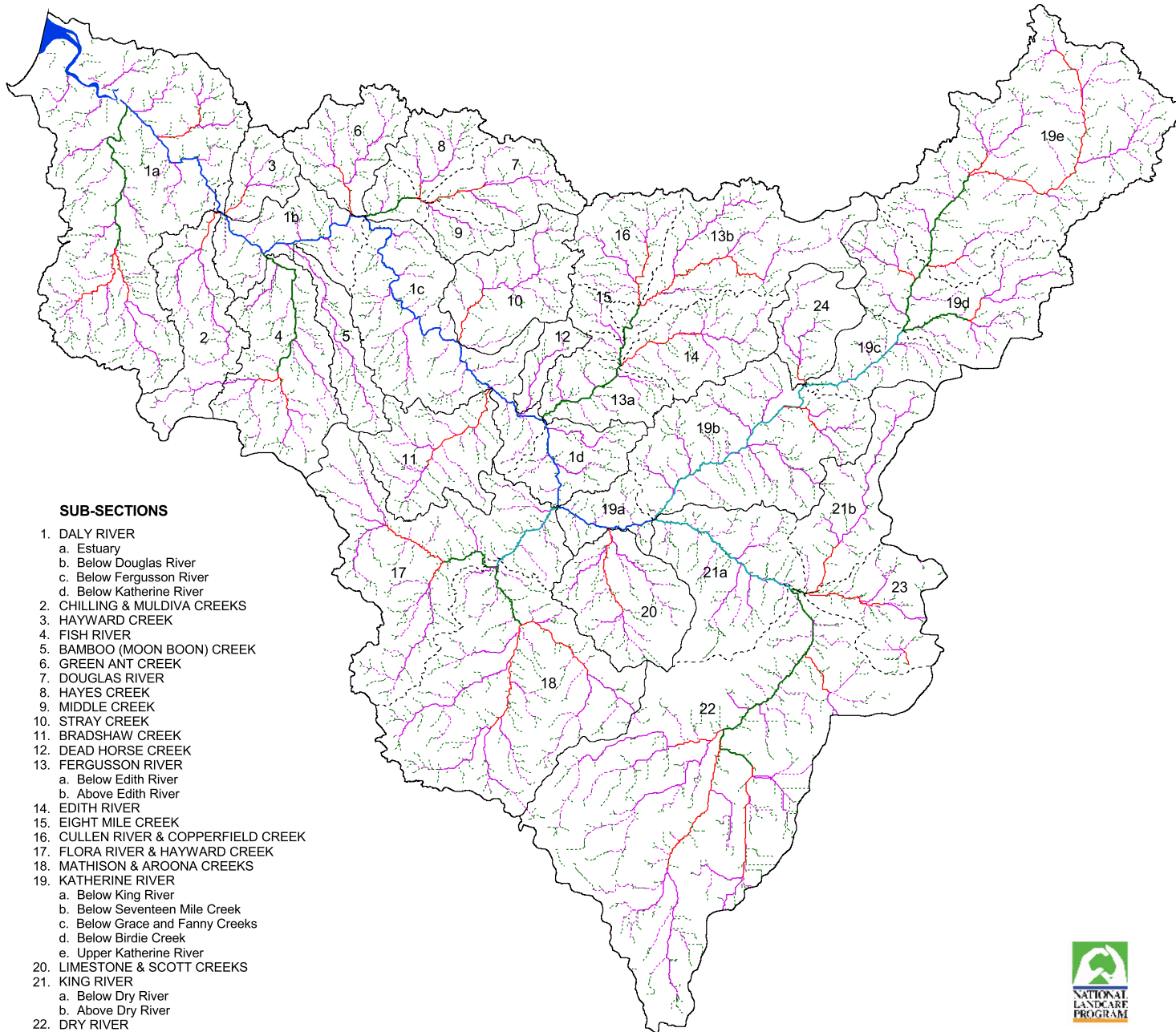
- 19a** Sub-section Number
- Catchment Boundary
- Sub-catchment Boundary
- - - - Sub-section Boundary
- River
- Creek

SUB SECTION NUMBER	AREA (km ²)	SUB SECTION NAME
1.	8,884	DALY RIVER a. Estuary b. Below Douglas River c. Below Fergusson River d. Below Katherine River
2.	1,241	CHILLING & MULDIVA CREEKS
3.	472	HAYWARD CREEK
4.	1,748	FISH RIVER
5.	602	BAMBOO (MOON BOON) CREEK
6.	914	GREEN ANT CREEK
7.	1,116	DOUGLAS RIVER
8.	535	HAYES CREEK
9.	313	MIDDLE CREEK
10.	1,216	STRAY CREEK
11.	1,181	BRADSHAW CREEK
12.	278	DEAD HORSE CREEK
13.	2,672	FERGUSSON RIVER a. Below Edith River b. Above Edith River
14.	1,057	EDITH RIVER
15.	180	EIGHT MILE CREEK
16.	879	CULLEN RIVER & COPPERFIELD CK
17.	2,946	FLORA RIVER & HAYWARD CK
18.	3,790	MATHISON & AROONA CKS
19.	9,569	KATHERINE RIVER a. Below King River b. Below Seventeen Mile Creek c. Below Grace and Fanny Creeks d. Below Birdie Creek e. Upper Katherine River
20.	1,275	LIMESTONE & SCOTT CREEKS
21.	2,815	KING RIVER a. Below Dry River b. Above Dry River
22.	7,208	DRY RIVER
23.	989	DURRINYAN CREEK
24.	696	SEVENTEEN MILE CREEK
TOTAL		52,577 DALY RIVER CATCHMENT



TOP END WATERWAYS PROJECT
DALY RIVER CATCHMENT

SUB-SECTIONS



SUB-SECTIONS

1. DALY RIVER
 - a. Estuary
 - b. Below Douglas River
 - c. Below Fergusson River
 - d. Below Katherine River
2. CHILLING & MULDIVA CREEKS
3. HAYWARD CREEK
4. FISH RIVER
5. BAMBOO (MOON BOON) CREEK
6. GREEN ANT CREEK
7. DOUGLAS RIVER
8. HAYES CREEK
9. MIDDLE CREEK
10. STRAY CREEK
11. BRADSHAW CREEK
12. DEAD HORSE CREEK
13. FERGUSSON RIVER
 - a. Below Edith River
 - b. Above Edith River
14. EDITH RIVER
15. EIGHT MILE CREEK
16. CULLEN RIVER & COPPERFIELD CREEK
17. FLORA RIVER & HAYWARD CREEK
18. MATHISON & AROONA CREEKS
19. KATHERINE RIVER
 - a. Below King River
 - b. Below Seventeen Mile Creek
 - c. Below Grace and Fanny Creeks
 - d. Below Birdie Creek
 - e. Upper Katherine River
20. LIMESTONE & SCOTT CREEKS
21. KING RIVER
 - a. Below Dry River
 - b. Above Dry River
22. DRY RIVER
23. DURRINYAN CREEK
24. SEVENTEEN MILE CREEK

Stream Order	Stream Length (kms - approx)	No of sites
1	8,114	5
2	3,955	8
3	2,072	25
4	841	32
5	426	17
6	213	13
7	362	31

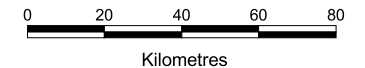
LEGEND

- Catchment Boundary
- - - Sub-catchment Boundary
- · · Sub-section Boundary

NOTE

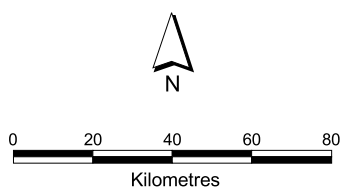
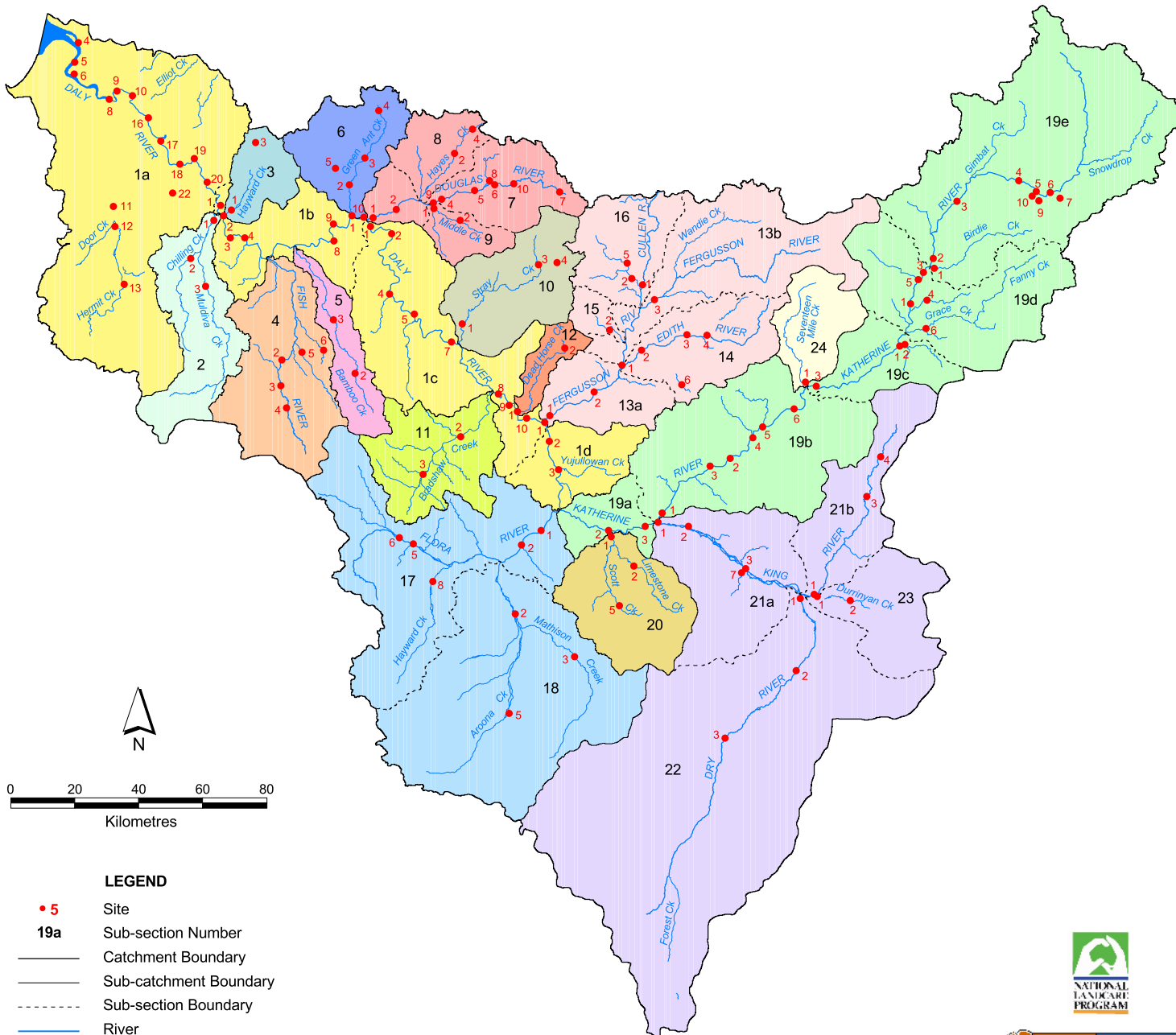
Stream orders were compiled using ArcGrid. The stream network was generated using a Digital Elevation Model (DEM) and was based on a 1:250,000 map scale. Stream orders have been assigned to rivers and creeks using the Strahler system. Seven stream orders were recorded for Daly River Catchment.

- Minor streams = stream orders 1 and 2.
- Medium - sized streams = stream orders 3, 4 and 5.
- Major streams = stream orders 6 and 7.



TOP END WATERWAYS PROJECT
DALY RIVER CATCHMENT

STREAM ORDERS



- LEGEND**
- 5 Site
 - 19a Sub-section Number
 - Catchment Boundary
 - Sub-catchment Boundary
 - - - Sub-section Boundary
 - River
 - Creek

- | SUB SECTION NUMBER | SUB SECTION NAME |
|--------------------|---|
| 1. | DALY RIVER
a. Estuary
b. Below Douglas River
c. Below Fergusson River
d. Below Katherine River |
| 2. | CHILLING & MULDIVA CREEKS |
| 3. | HAYWARD CREEK |
| 4. | FISH RIVER |
| 5. | BAMBOO (MOON BOON) CREEK |
| 6. | GREEN ANT CREEK |
| 7. | DOUGLAS RIVER |
| 8. | HAYES CREEK |
| 9. | MIDDLE CREEK |
| 10. | STRAY CREEK |
| 11. | BRADSHAW CREEK |
| 12. | DEAD HORSE CREEK |
| 13. | FERGUSSON RIVER
a. Below Edith River
b. Above Edith River |
| 14. | EDITH RIVER |
| 15. | EIGHT MILE CREEK |
| 16. | CULLEN RIVER & COPPERFIELD CK |
| 17. | FLORA RIVER & HAYWARD CK |
| 18. | MATHISON & AROONA CKS |
| 19. | KATHERINE RIVER
a. Below King River
b. Below Seventeen Mile Creek
c. Below Grace and Fanny Creeks
d. Below Birdie Creek
e. Upper Katherine River |
| 20. | LIMESTONE & SCOTT CREEKS |
| 21. | KING RIVER
a. Below Dry River
b. Above Dry River |
| 22. | DRY RIVER |
| 23. | DURRINYAN CREEK |
| 24. | SEVENTEEN MILE CREEK |



TOP END WATERWAYS PROJECT
DALY RIVER CATCHMENT

LOCATION OF SITES



HANDY HINTS USING ADOBE ACROBAT READER

An update of this free software is available to download from the web. Click on this address to visit the web site : <http://www.adobe.com/products/acrobat/readermain.html>

1. SETTING UP YOUR PAGE IN ADOBE ACROBAT (VERSION 4.05)

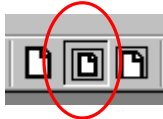
Pull down menu *FILE* and select *PREFERENCES*
Now select *GENERAL*
Change the *page units* to "millimetres"
Change the *magnification default zoom* to "Fit in Window"

*You will notice the actual page size for each pdf page is noted in millimetres at the bottom of the view.
Each page number is also noted as you scroll through the document.*

2. HANDY FUNCTIONS TO USE



BOOKMARKS *have been created to help you locate information in this document. Click on this tool to view the bookmarks.*



FIT IN VIEW *Select this tool to view the entire page.*



ZOOM IN *Drag and click a rectangle to enlarge a selected area.*



PANNING *This tool allows you to move around the viewing screen. Select the tool and drag the hand icon to scroll around the screen.*



SEARCH *The left binoculars can search and locate a specific word or phrase in the current page. The right binoculars will search the entire document. (control G to find the next location)*

3. HOW TO PRINT THIS PDF DOCUMENT

These maps were designed to be printed on an A4 colour printer.
For best results when printing, select the highest resolution possible.

1. Select Print icon
2. Select printer required.
3. "FIT TO PAGE" must NOT be ticked
4. Select which pages you wish to print (*see page no – bottom of the screen*)
5. Select PROPERTIES tab
6. Select A4 portrait or landscape to suit the page
7. Change the resolution to suit
8. Press OK
9. Press OK to print

