

# Modification Notice - Regulation 22

Interest Holder	Imperial Oil and Gas	EMP Title	Carpentaria Pilot Project Imperial Oil & Gas EP 187	Unique EMP ID No.	IMP 5-3	Mod No.	5	Date	May 2026
Brief Description	<p>This Reg 22 provides notification under the <i>Petroleum (Environment) Regulations 2016 (NT)</i> of a minor realignment of a section of gathering line with its associated right-of-way and a corresponding adjustment to the Infrastructure Movement Zone (IMZ) as a modification to the approved Environmental Management Plan, IMP 5-3.</p> <p>The realignment relocates the Carpentaria Highway crossing point to a location better suited to horizontal directional drilling (HDD) based on field verification and walkover by Imperial's civil team contractor. The gathering line path from the Carpentaria Highway to Carpentaria 2/3/5 has also been straightened. The revised alignment passes through the indicative footprint of well pad BA; should BA proceed to construction, its final location/design will be determined within the approved IMZ at that time, consistent with Section 3.3.1 of the EMP. The HDD methodology, ROW dimensions, and flowline design remain unchanged from those approved under Section 3.4.8 of the EMP. The HDD entry and exit pads associated with the realigned crossing are located within the Carpentaria Highway road reserve. Imperial has executed an <i>Agreement for a Pipeline within a Territory Road Reserve with the Northern Territory of Australia</i>, administered by the Department of Infrastructure, Planning and Logistics, which authorise the works within the road reserve. Cultural heritage and ecological surveys for the realigned section are being arranged and will be completed by suitably qualified persons prior to any ground disturbance, consistent with the requirements of EPS-CH1 (systematic archaeological survey by SQP in the proposed disturbance area prior to new clearing) and EPS-TE1 (on-ground scouting by an ecologist prior to any new clearing). The adjusted IMZ remains within the area covered by Imperial's current AAPA Authority Certificate.</p> <p>All existing management controls, environmental performance standards, environmental outcomes, and reporting requirements set out in the approved EMP remain unchanged and apply to the realigned activity. The potential total length of gathering line and maximum clearing for the Carpentaria Pilot Project remain unchanged. The change is within the scope contemplated by Section 3.3.1 of the EMP, which provides for adjustment of the IMZ to optimise the flowline network and accommodate field-verified site conditions</p>								



<b>Geospatial Files Included?</b>	Yes						
<b>Does the proposed change result in a new, or increased, potential or actual environmental impact or risk?</b>	<b>If an INCREASE in an existing potential or actual environmental impact or risk is it provided for in the approved EMP?</b>	<b>Does the proposed change require additional mitigation measures to be included?</b>	<b>Has additional stakeholder engagement been conducted?</b>	<b>Does it require additional environmental performance standards and measurement criteria?</b>	<b>Does it affect compliance with Sacred Site Authority Certificates?</b>	<b>Does it affect current rehabilitation, weed, fire, wastewater, erosion and sediment control, spill or emergency response plans?</b>	<b>Will the environmental outcome continue to be achieved and will the impacts and risks be managed to ALARP and acceptable?</b>
No	No	No	No	No	No	No	Yes

<b>Current EMP Text</b>	<b>Amended EMP Text</b>
<p>Not applicable – no EMP text changes only replacement of images.                      Figures changed:</p> <ul style="list-style-type: none"> <li>• Figure 3.3–1 Regulated Activity - Indicative - Map 1</li> <li>• Figure 3.3–6 Regulated Activity 1 in 100-year Flood Modelling - Map 1</li> <li>• Figure 3.3–11 Regulated Activity Indicative Elevation – Map 1</li> <li>• Figure 3.3–16 Regulated Activity Ordered Streams, GDEs, Water Bores– Map 1</li> <li>• Figure 3.3–21 Regulated Activity – Vegetation – Map 1</li> </ul>	<p>New Images below:</p> <ul style="list-style-type: none"> <li>• Figure 3.3–1 Regulated Activity - Indicative - Map 1</li> <li>• Figure 3.3–6 Regulated Activity 1 in 100-year Flood Modelling - Map 1</li> <li>• Figure 3.3–11 Regulated Activity Indicative Elevation – Map 1</li> <li>• Figure 3.3–16 Regulated Activity Ordered Streams, GDEs, Water Bores– Map 1</li> <li>• Figure 3.3–21 Regulated Activity – Vegetation – Map 1</li> </ul>

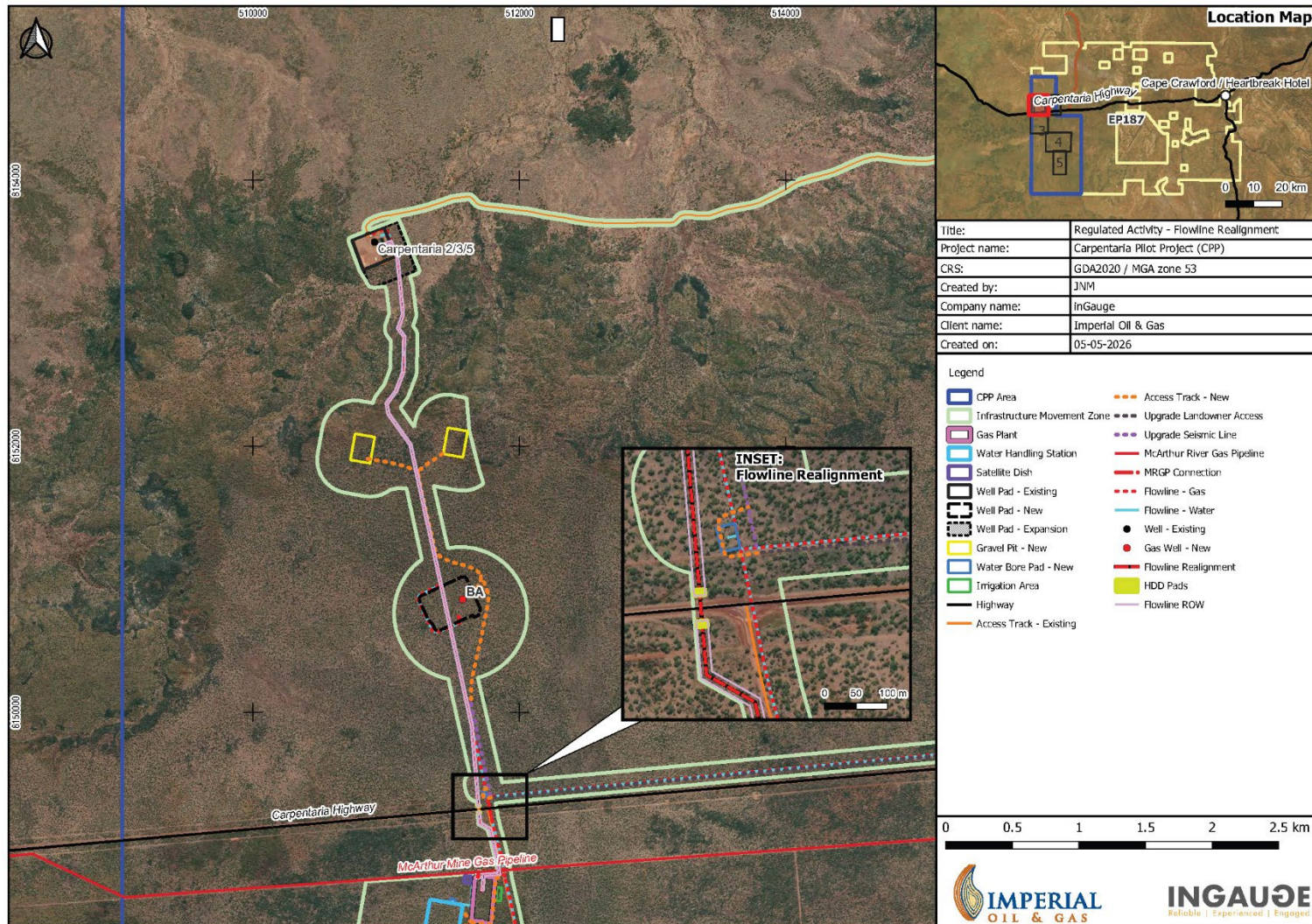


Figure 3.3—1 Regulated Activity - Indicative - Map 1

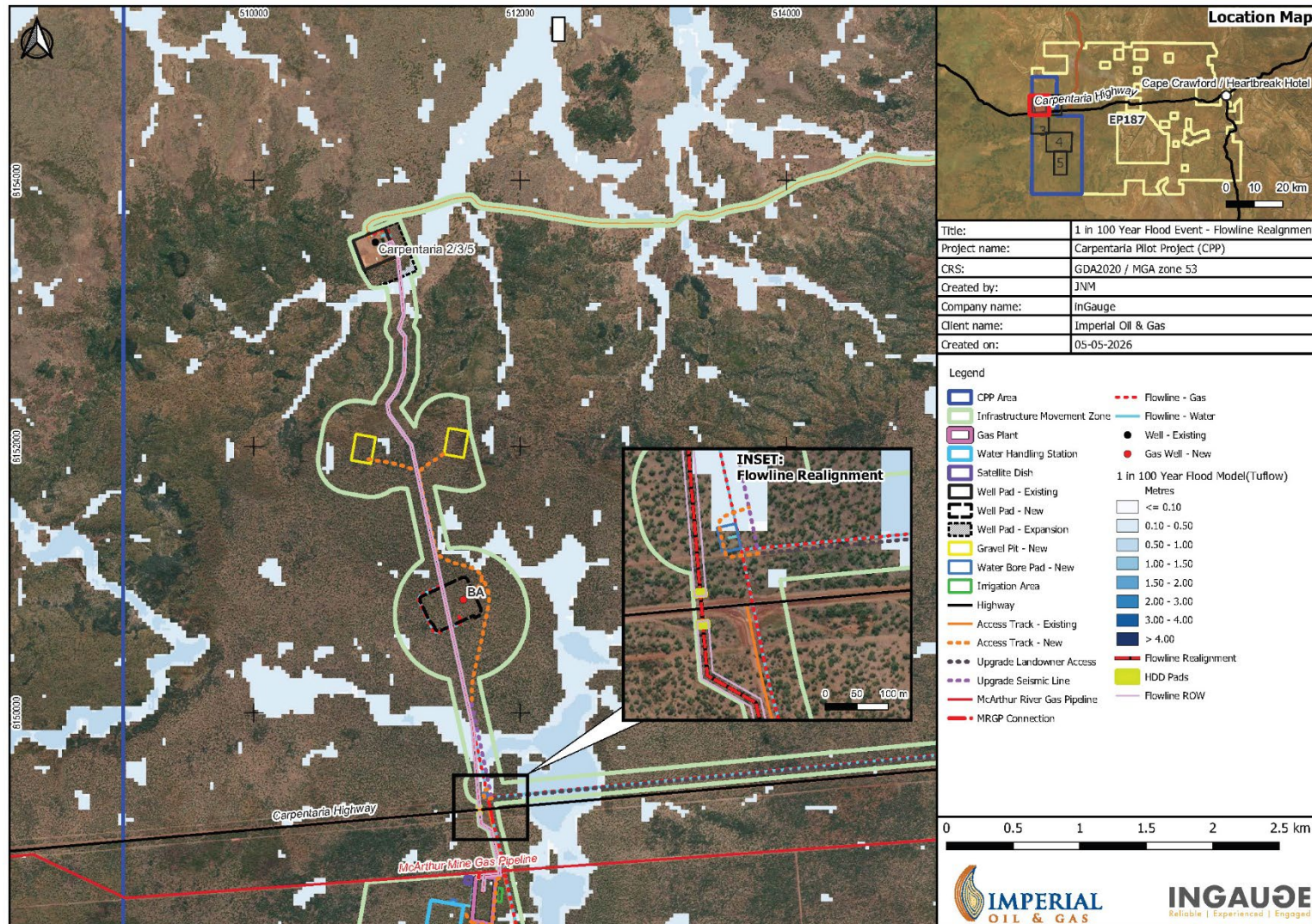


Figure 3.3–6 Regulated Activity 1 in 100-year Flood Modelling - Map 1

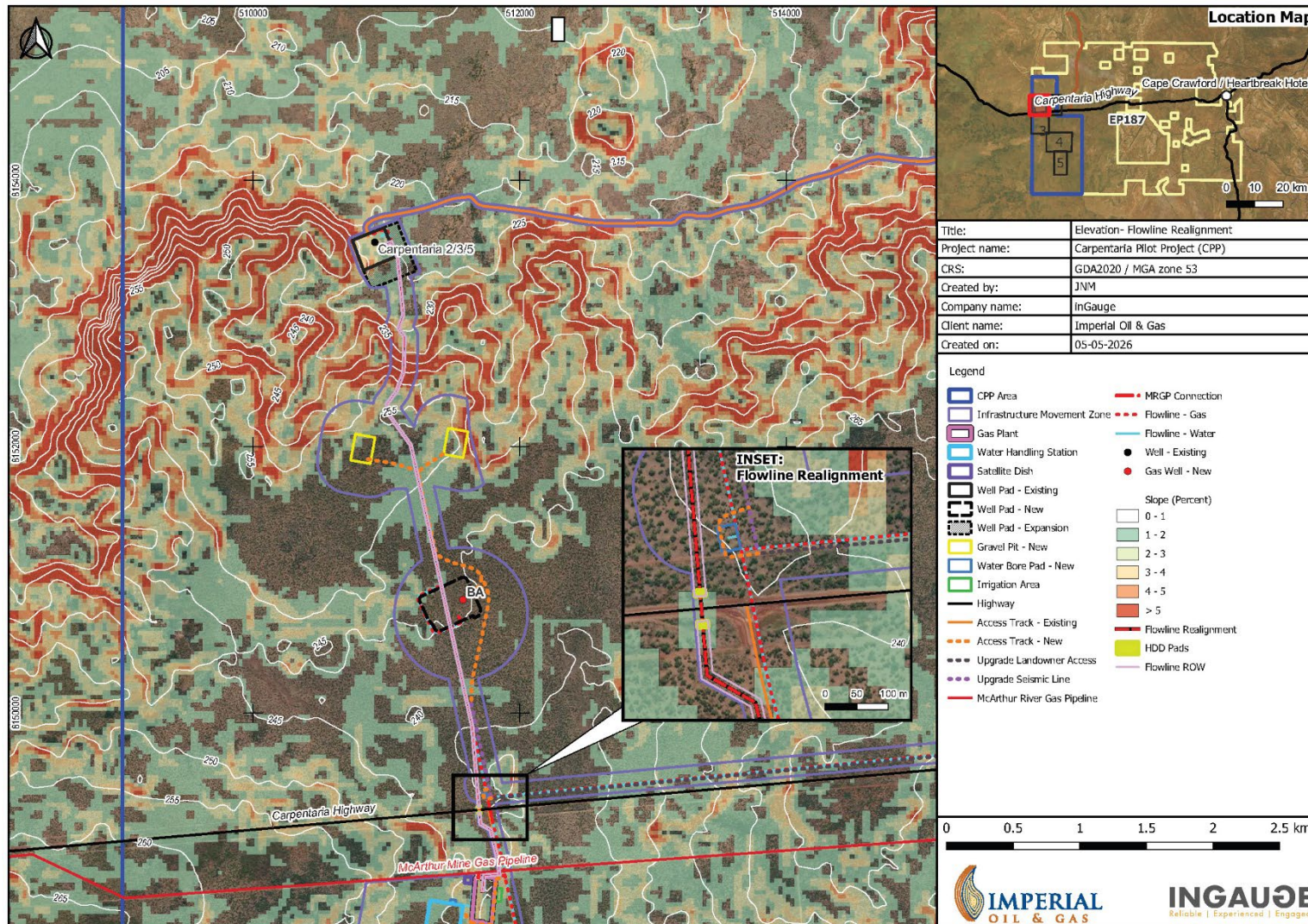


Figure 3.3–11 Regulated Activity Indicative Elevation – Map 1

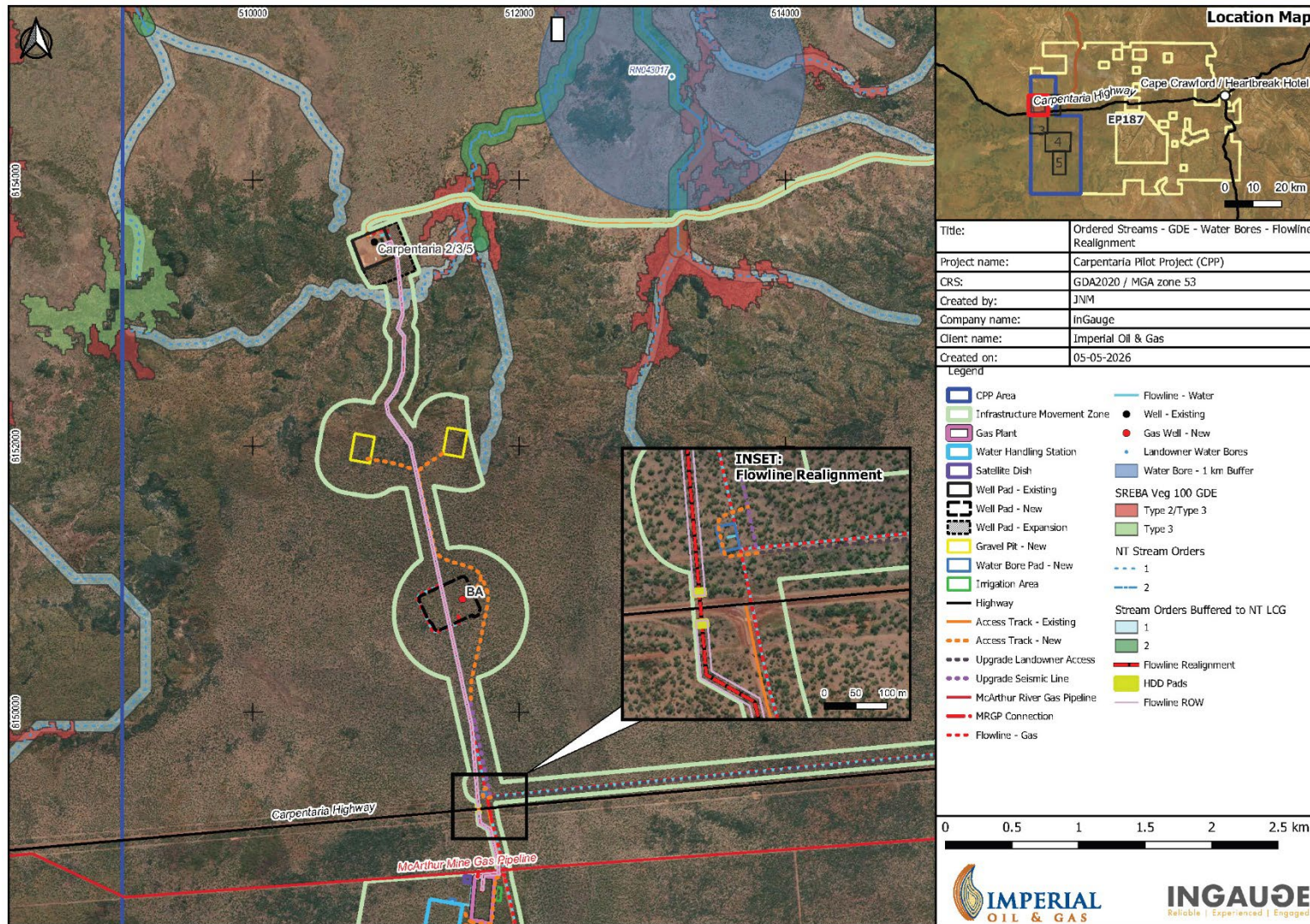


Figure 3.3–16 Regulated Activity Ordered Streams, GDEs, Water Bores– Map 1

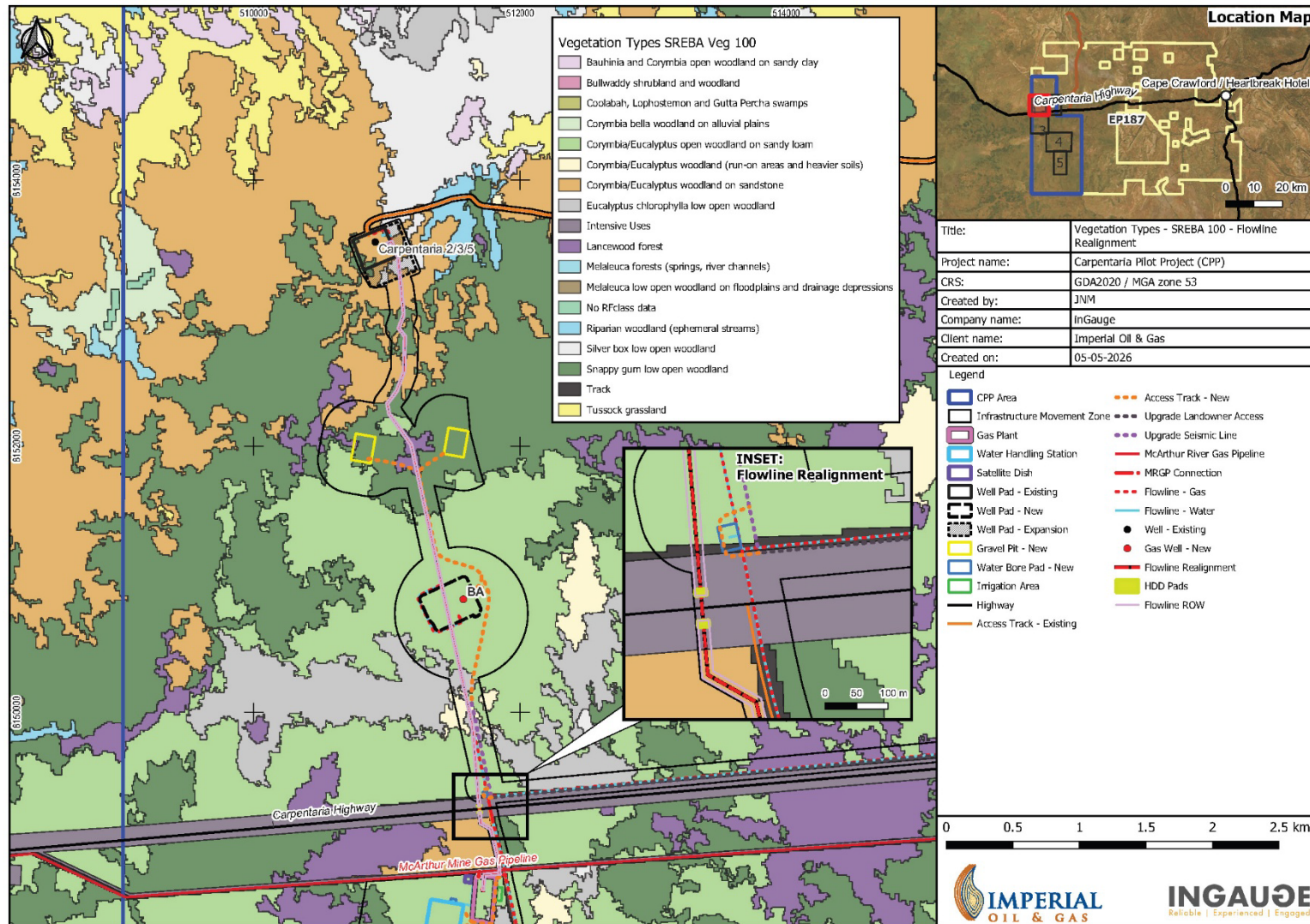


Figure 3.3–21 Regulated Activity - Vegetation - Map 1