

# AQUATIC BIODIVERSITY STUDIES IN THE BEETALOO BASIN

Studies of aquatic biodiversity in the Beetaloo basin aim to document the distribution of aquatic species in the region, and to identify sites of high ecological value.

Photos: D. Wedd and P. Dostine



Water Lily  
*Nymphaea* sp.



Wavy Marshwort  
*Nymphoides crenata*



Freshwater Sole  
*Brachirus selheimi*



Toothless Catfish  
*Anodontiglanis dahli*



Mouth Almighty  
*Glossamia aprion*



Sooty Grunter  
*Hephaestus fuliginosus*



Longtail Garfish  
*Hyporhamphus quoyi*



Spangled Perch  
*Leiopotherapon unicolor*



Western Rainbowfish  
*Melanotaenia australis*



Chequered Rainbowfish  
*Melanotaenia splendida inornata*



Purple-spotted Gudgeon  
*Mogurnda mogurnda*



Berney's Catfish  
*Neoarius berneyi*



Bony Bream  
*Nematalosa erebi*



Sleepy Cod  
*Oxyeleotris* spp.



Rendahl's Catfish  
*Porochilus rendahli*



Seven-spot Archerfish  
*Toxotes chatareus*



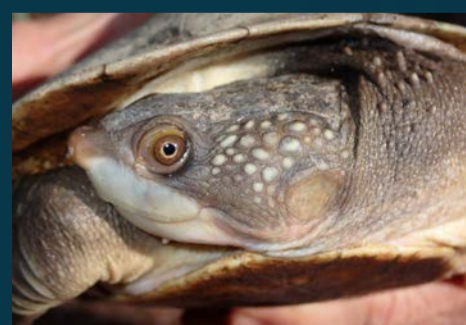
Giant River Prawn  
*Macrobrachium spinipes*



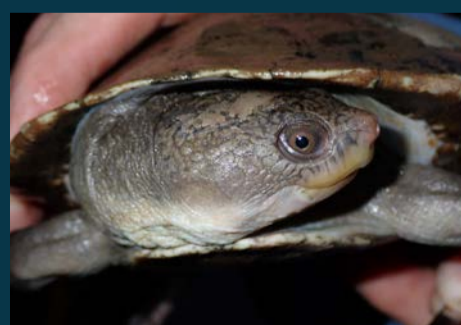
Redclaw  
*Cherax quadricarinatus*



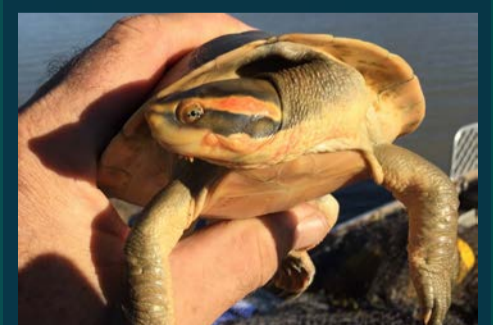
Freshwater Crab  
*Austrothelphusa* sp.



Northern Snapping Turtle  
*Elseya dentata* (Roper form)



Gulf Snapping Turtle  
*Elseya lavarackorum*



Worrell's Turtle  
*Emydura subglobosa worrelli*