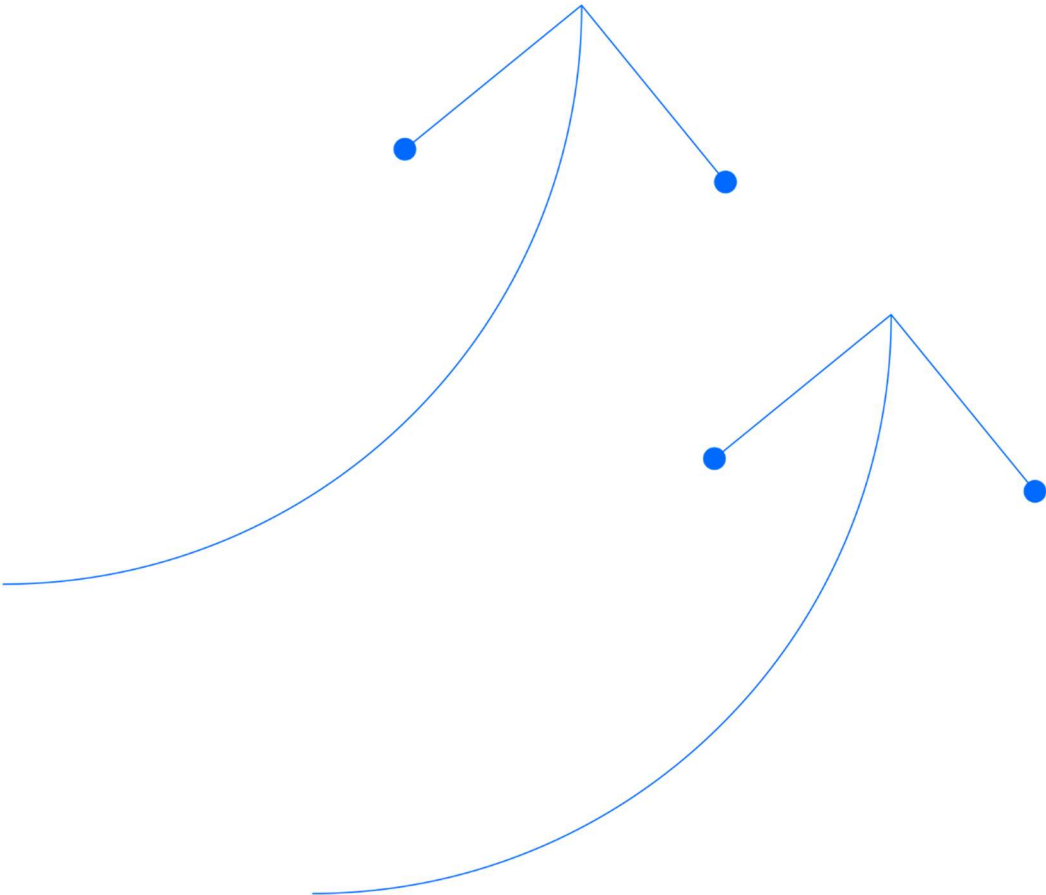


# APPENDIX B: BUSHFIRE MANAGEMENT PLAN

April 2026



# Table of Contents

<b>1. Introduction</b>	<b>1</b>
1.1. Objectives	1
1.2. Impact of the activity on existing bushfire management regime	1
1.3. Consolidation of previously approved EMPs	1
<b>2. Analysis of baseline information</b>	<b>2</b>
2.1. Baseline data source	2
2.2. Fire frequency and last burn	2
<b>3. Fire management</b>	<b>6</b>
3.1. Coordination with the landholder and other land users	6
3.2. Seasonal conditions and fuel load assessments	6
3.3. Fire access trails and fire breaks	6
3.4. Controlled burns	6
3.5. Monitoring of bushfire alerts	6
3.6. Fire control measures	6
<b>4. Infrastructure design, construction and operation</b>	<b>7</b>
<b>5. Emergency contacts</b>	<b>8</b>
<b>6. Fire management plan</b>	<b>8</b>
<b>7. Fire management for previously approved disturbances</b>	<b>11</b>
7.1. Scope	11
7.2. Fire control zones	11
7.3. Monitoring	11
7.4. Fire mapping and reporting	11
<b>8. References</b>	<b>16</b>

# 1. Introduction

This Bushfire Management Plan is in support of the EP 161 Beetaloo Basin Appraisal Activity Environmental Management Plan (EMP). This Plan outlines the fire risk and management strategies for the Activity associated with EP 161. The permit is located within the Savana Fire Management Zone, with operations occurring around the Tanumbirini Station working area (Parcel NT Por 701). Bushfire management within this zone is guided by the *Savanna Regional Bushfire Management Plan* (Department of Environment, Parks and Water Security (Department of Environment, 2023) .

## 1.1. Objectives

The key objectives of the development and implementation of this BMP are as follows:

- Identify fire hazards related to the Activity.
- Manage the Activity to reduce the risk of fire impacting the following:
  - Human health and communities
  - Flora communities
  - Native fauna.
- Be prepared for fire events.
- Limit the impact of any fire events.

## 1.2. Impact of the activity on existing bushfire management regime

Arrangements for the mitigation, management and suppression of bushfires in the region are to be based on risk management principles from the *Savanna Regional Bushfire Management Plan* and the *Bushfire Management Planning Guide: Onshore Petroleum Projects* (DENR, 2020) that will guide the direction and evaluation of these activities.

Based on the controls reflected in this Plan, there is no anticipated impact on the existing bushfire management regime from the Activity.

## 1.3. Consolidation of previously approved EMPs

This BMP applies to new disturbances associated with the Beetaloo Appraisal Program within EP 161. It provides an overarching framework that outlines the fire management strategy, methods and monitoring requirements for these new disturbances. Site-specific one-page BMP's for the well pads have been developed for the Jibera South and Newcastle South activities described in the EP 161 Beetaloo Appraisal EMP and are provided in Section 6.

Fire management for previously approved disturbances are addressed in Section 7.

This BMP is the fire management document for activities undertaken under this EMP, including works on previously approved disturbance areas where ongoing obligations remain. Section 7 summarises the legacy-area fire management and monitoring requirements that continue to apply under this EMP.

Refer to Section 3.14 of the EMP for a full list of activities being undertaken under this EMP.

## **2. Analysis of baseline information**

### **2.1. Baseline data source**

Baseline fire information has been sourced from The North Australia and Rangelands Fire Information (NAFI) website and assessed (NAFI, 2025). NAFI is independently funded by the Commonwealth of Australia through the Department of Industry, Science, Energy and Resources. It is managed through the Darwin Centre for Bushfire Research as a branch of the Charles Darwin University's Research Institute for the Environment and Livelihoods.

The NAFI is the most reliable source of Northern Territory (NT) bushfire data. Data obtained through the NAFI website has been reviewed and analysed, and the results are presented below.

### **2.2. Fire frequency and last burn**

The number of fires and last burns to occur within the last ten years within Jibera South and Newcastle South are shown in Figure 1 and Figure 2 respectively. These figures show that the location of the new well pads are generally on the edge of previously recorded burns.

The number of fires and last burns to occur over the last ten years across all Santos' activities within EP 161 is shown in Figure 3 (detailed inset of all Santos EP 161 infrastructure can be seen in the EMP Figure 27).

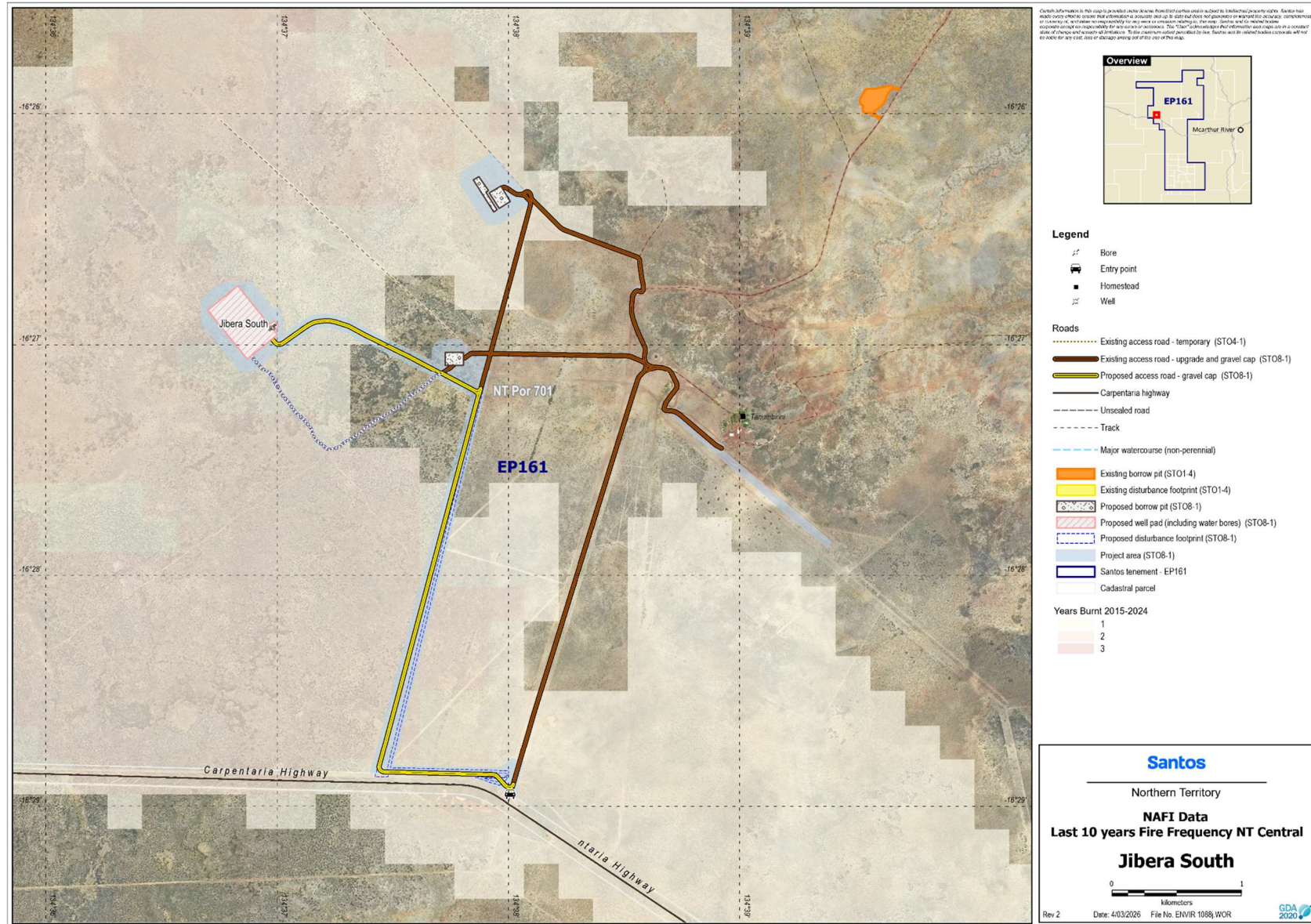
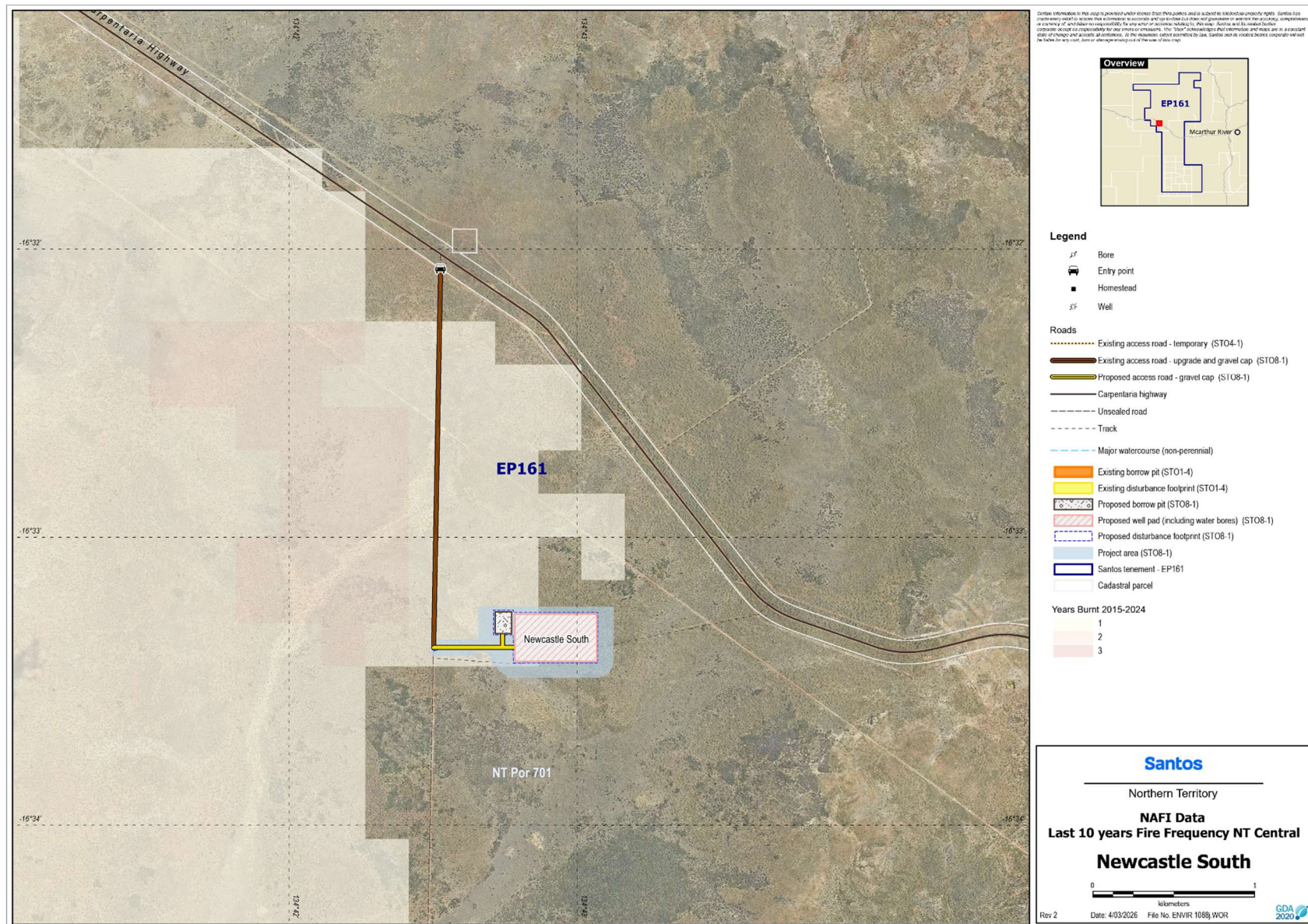


Figure 1: Jibera South Fire Frequency 2015-2024



**Figure 2: Newcastle South Fire Frequency 2015-2024**

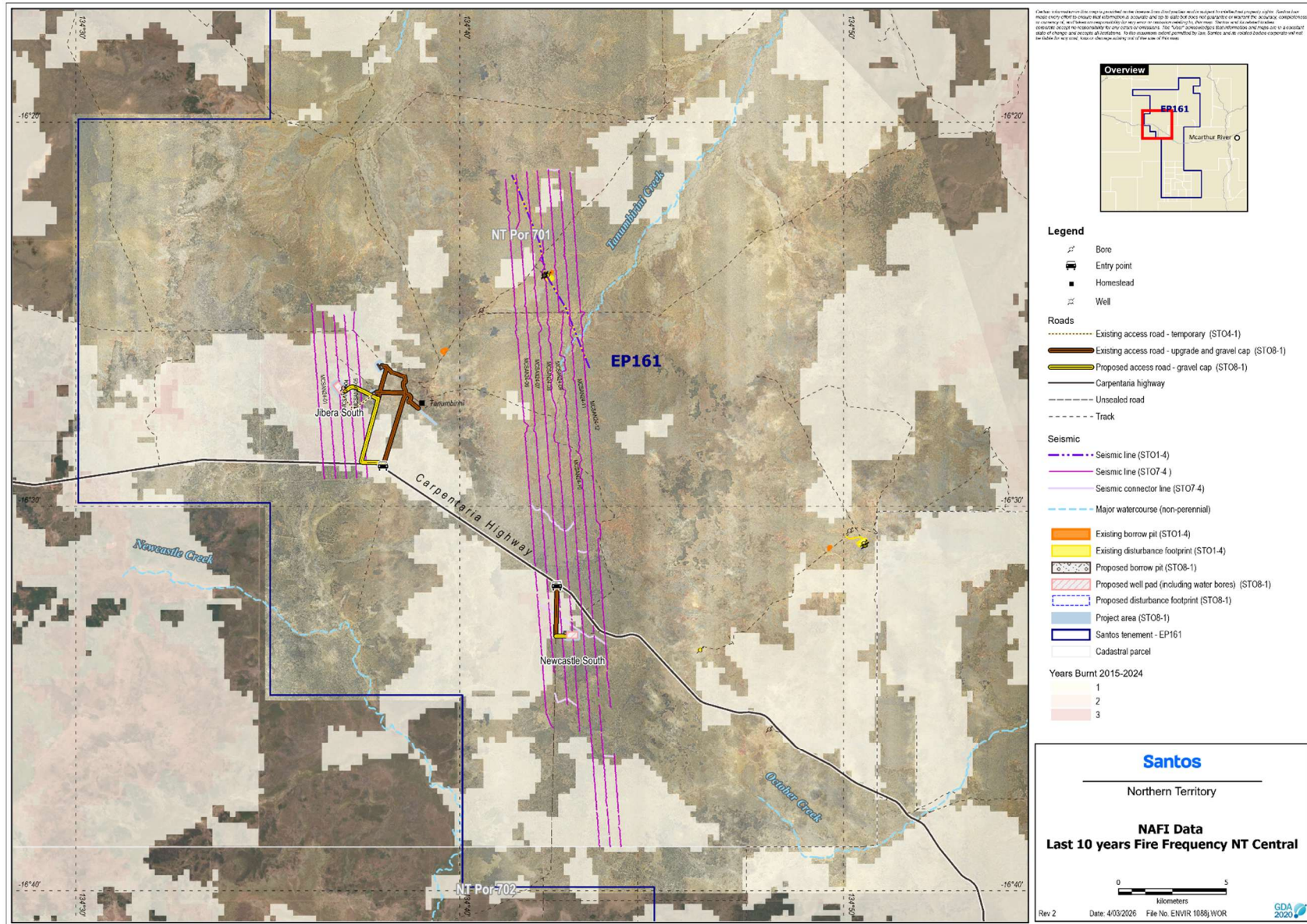


Figure 3: EP 161 Fire Frequency 2015-2024

## 3. Fire management

### 3.1. Coordination with the landholder and other land users

Through the land use agreements and ongoing engagement, the Interest Holder will work with the landholder to ensure the Activities do not affect the landholder's fire management regime and are consistent with the landholder's fire management objectives and strategies.

### 3.2. Seasonal conditions and fuel load assessments

During annual weed surveys the well pad, fire access trails and breaks will be assessed to ensure new growth/weeds are controlled, to manage fuel load and not increase the risk of a fire on the landholder's property from the Activity. To be completed post-wet season/prior to October, which is typically the start of the high bushfire risk period in southern NT.

### 3.3. Fire access trails and fire breaks

Fire access trails and fire breaks will be cleared around the well pad and campsite.

A fire access trail is a vegetation-free access track bordering the well pad and/or campsite. A fire break is a vegetation-free area bordering the well pad and/or campsite that isn't typically used for access.

### 3.4. Controlled burns

Controlled burns are not planned to be carried out by the Interest Holder. Management of bushfire risk material in areas required for the Activity will be monitored yearly, along with scheduled weed surveys to ensure fire break/access trails remain vegetation free until rehabilitation commences.

### 3.5. Monitoring of bushfire alerts

As per the Monitoring Program of the EMP (Section 8.6), weather conditions and Fire Weather Warnings will be checked daily during operations via the Bureau of Meteorology.

The NT government has created a three-tier bushfire alert system. The three alerts are:

- **Advice** – Areas which have either a small fire which is controllable, planned fuel reduction burning or an area likely to be affected by smoke.
- **Watch and act** – An area that has a bushfire approaching a community, that is changing with conditions or will threaten property or life if not controlled.
- **Emergency warning** – An area that is in immediate danger from the bushfire and you must act now to protect your life.

Other sources of information are the Northern Territory Government Secure NT website: <https://securent.nt.gov.au/alerts>, Facebook (Bushfires NT), or Twitter (@BushfiresNT).

### 3.6. Fire control measures

As reflected in Appendix O *Risk Assessment* fire mitigation measures include:

- Consultation and coordination with pastoralist regarding fire management obligations.

- Clearing associated with constructing and/or re-establishing access tracks, well pad, campsite and borrow pit/s - including the clearing of fuel load vegetation within the fire break.
- Clearing of the well pad and campsite to include a vegetation clear perimeter to act as a fire break.
- Training and inductions will cover designated smoking areas, the location of firefighting equipment, and emergency response.
- Smoking will only be permitted in areas clear of vegetation and there will be no disposal of butts to ground.
- Flaring to occur within vegetation free safety zones so vegetation not exposed to a radiant heat exceeding  $8\text{kW/m}^2$ .
- Flaring activities must not be conducted during fire ban periods.
- All project infrastructure will be designed and constructed to mitigate risks of ignition.
- Machinery and vehicles should be parked in areas of low fire risk.
- All vehicles will be equipped with operational VHF and/or UHF radio transceivers.
- Water bores will be available within close proximity of the well pad and/or the groundwater pit on the well pad, available for firefighting.
- Fire extinguishers must be readily available and accessible throughout work areas.
- Weather and fire danger rating monitoring during periods of high fire risk.
- Spark arresters used on plant and equipment under the relevant equipment specification.
- No burning of solid waste on-site.
- Monitor NAFI annual fire mapping.
- During operations, daily toolbox meetings will be conducted to:
  - Alert the workforce of the fire risk level for the day.
  - Discuss any fire incidents and near misses and remedial actions.

## 4. Infrastructure design, construction and operation

The campsite and well pad infrastructure will be designed/constructed with a cleared, minimum ten metre ring-fire access trail/fire break. Fire access trails and breaks will be inspected in conjunction with weed surveys post-wet season (prior to October, which is typically the start of the high bushfire risk period) for integrity and clearing maintenance carried out where inspections identify regrowth or encroachment that reduces firebreak functionality.

Any flaring associated with Extended Production Testing (EPT) will occur within the approved flare system (horizontal flare with 3 m earthen berm) located inside a vegetation-free exclusion zone. A minimum 30 m vegetation-free buffer will be maintained around the flare area, with the final setback to be confirmed by contractor validation modelling prior to flaring to ensure vegetation at the nearest edge is not exposed to radiant heat greater than  $8\text{ kW/m}^2$ .

Gas produced during EPT will be sent to a mobile flare system to allow a controlled release and gas burning. It will be equipped with an autoignition system that provides electrical impulses to generate a spark, to ensure that the flare is always operational. The flare stack will be capable of withstanding three second wind gusts of up to 100 kilometres per hour and will have a 98 per cent combustion efficiency.

## 5. Emergency contacts

**Table 1: Emergency contact details**

Entity	Contact details
Tanumbirini Station (NT Por 701)	██████████ (Station Manager)
	Mobile: ██████████
	Email: ████████████████████
Bushfire Northern Territory Headquarters	(08) 8922 0844 Bushfires.nt@nt.gov.au
Bushfire Northern Territory Katherine Office	(08) 8973 8872
National Response Centre	1800 076 251
Emergency	<b>000</b> or <b>112</b> (mobile)
NAFI Central	<a href="http://www.firenorth.org.au/nafi3/">http://www.firenorth.org.au/nafi3/</a>
Secure NT (Fire Bans)	<a href="https://securent.nt.gov.au/alerts">https://securent.nt.gov.au/alerts</a>
Fire Incident Map	<a href="https://pfes.nt.gov.au/incidentmap/">https://pfes.nt.gov.au/incidentmap/</a>

## 6. Fire management plan

The Interest Holder has drafted one-page, tailored Fire Management Plans for the well pad and the campsite. These will be posted at prominent locations at the well pad and campsite and included in site inductions. They will be used / referenced in conjunction with Appendix M *Emergency Response Plan*.

These tailored one-page plans are presented in Figure 4 and Figure 5 below.

# Bushfire Management Plan – Jibera South Well Pad Santos

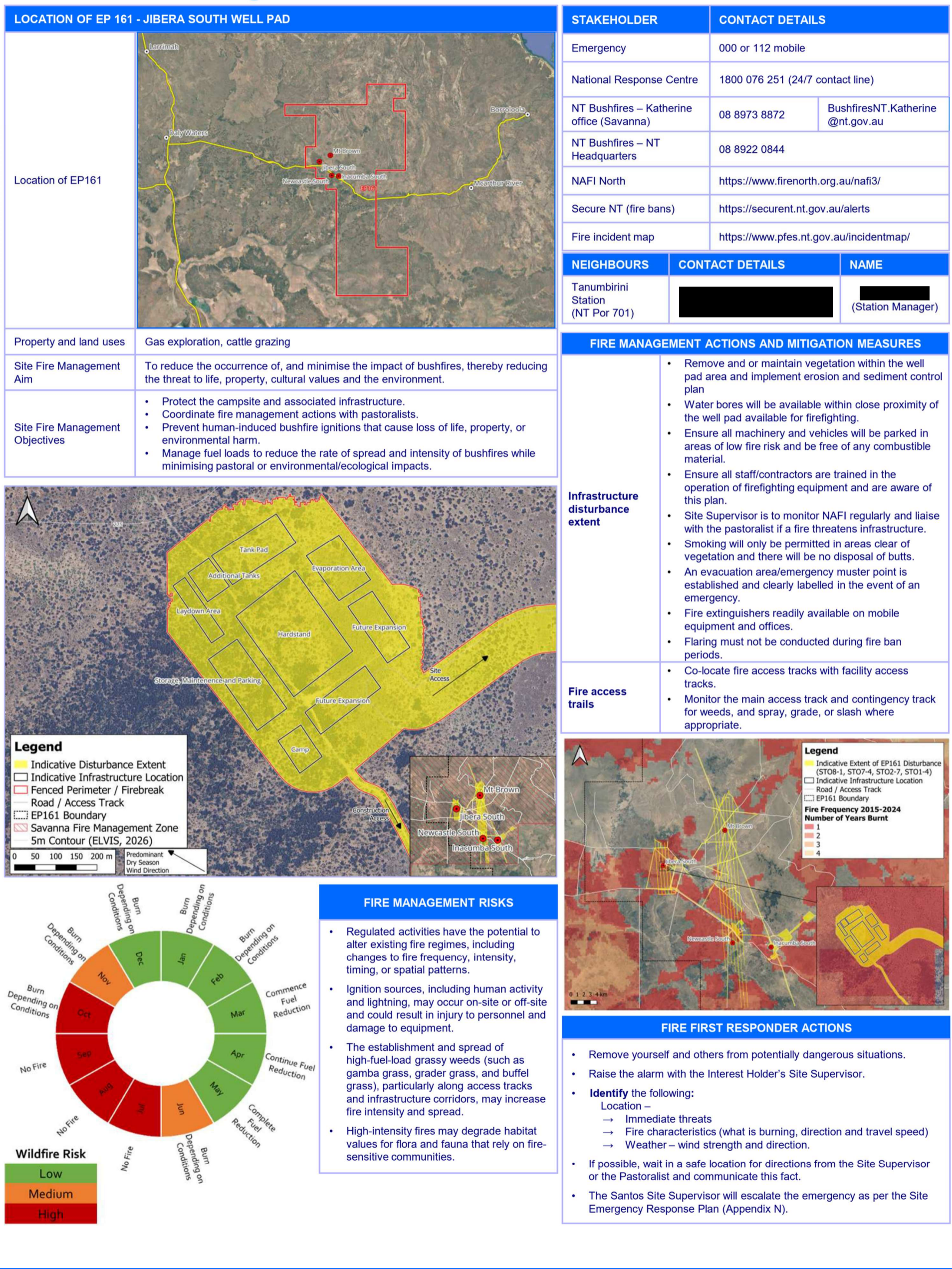


Figure 4: Fire management plan 1-Pager - Jibera South Well Pad

# Bushfire Management Plan – Newcastle South Well Pad

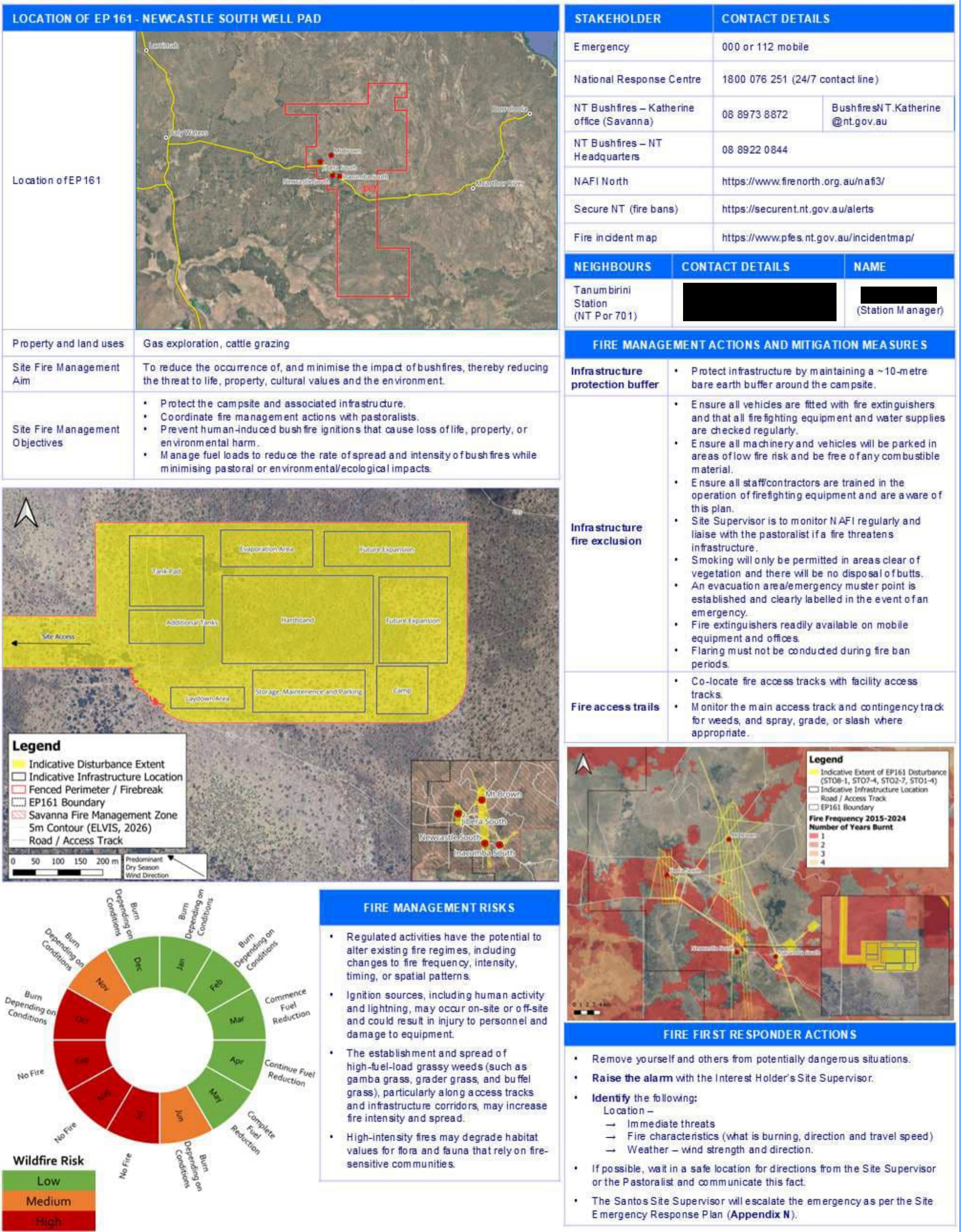


Figure 5: Fire management plan 1-Page – Newcastle South Well Pad

## 7. Fire management for previously approved disturbances

### 7.1. Scope

This BMP incorporates previously approved disturbance areas and associated access tracks within EP161 that were established under the following approved EMPs and are being incorporated into this EMP:

- STO7-4: EP161 2D Seismic and Ground Gravity Survey Program
- STO1-4: McArthur Basin Civil and Seismic Program (including areas established under STO2-7, STO2018A and STO2018B).

The fire management and monitoring measures below apply where legacy disturbance areas remain open or are being accessed and maintained under this EMP.

### 7.2. Fire control zones

- Existing fire control zones and firebreaks established under STO7-4 and STO1-4 will be maintained where these areas remain in use for rehabilitation, monitoring, access, or other ongoing obligations.
- For legacy well pads and campsites, a 10 m vegetation-free perimeter (firebreak / fire access trail zone) will be maintained during periods when personnel are on site or where required based on landholder requirements.
- Fuel load on legacy pads will be assessed during the annual post-wet season weed survey program, with slashing/grading/spraying undertaken where required to keep the perimeter functional and reduce ignition risk (in consultation with the landholder).
- Currently the Mt Brown well pad and Inacumba South bore pad are the only infrastructure extents in the monitoring and maintenance phase under this EMP. No further seismic surveys are proposed under this EMP.

### 7.3. Monitoring

- During periods where personnel are on site (e.g. rehabilitation, inspection, maintenance), fire weather and bushfire alerts will be monitored daily using Bureau of Meteorology forecasts and NT Government bushfire alert sources (e.g. SecureNT and the NT incident map).
- Bushfire risk levels, incidents/near misses, and required remedial actions will be communicated to personnel via toolbox meetings or equivalent daily briefings.

### 7.4. Fire mapping and reporting

- NAFI annual fire mapping will be monitored to track changes to fire frequency and time since last burn across EP161, including legacy disturbance areas.
- If a fire occurs within or immediately surrounding a legacy disturbance area during periods of activity, the Interest Holder will consult with the landholder and endeavour to map the extent of fire impacts and provide the information to the regulator where required/requested (consistent with prior EMP commitments).

One-page, tailored BMP's for the Mt Brown well pad, Inacumba south bore pad, Inacumba North well pad and Bennetts bore pad are presented in the figures below.

# Bushfire Management Plan – Mt Brown Well Pad

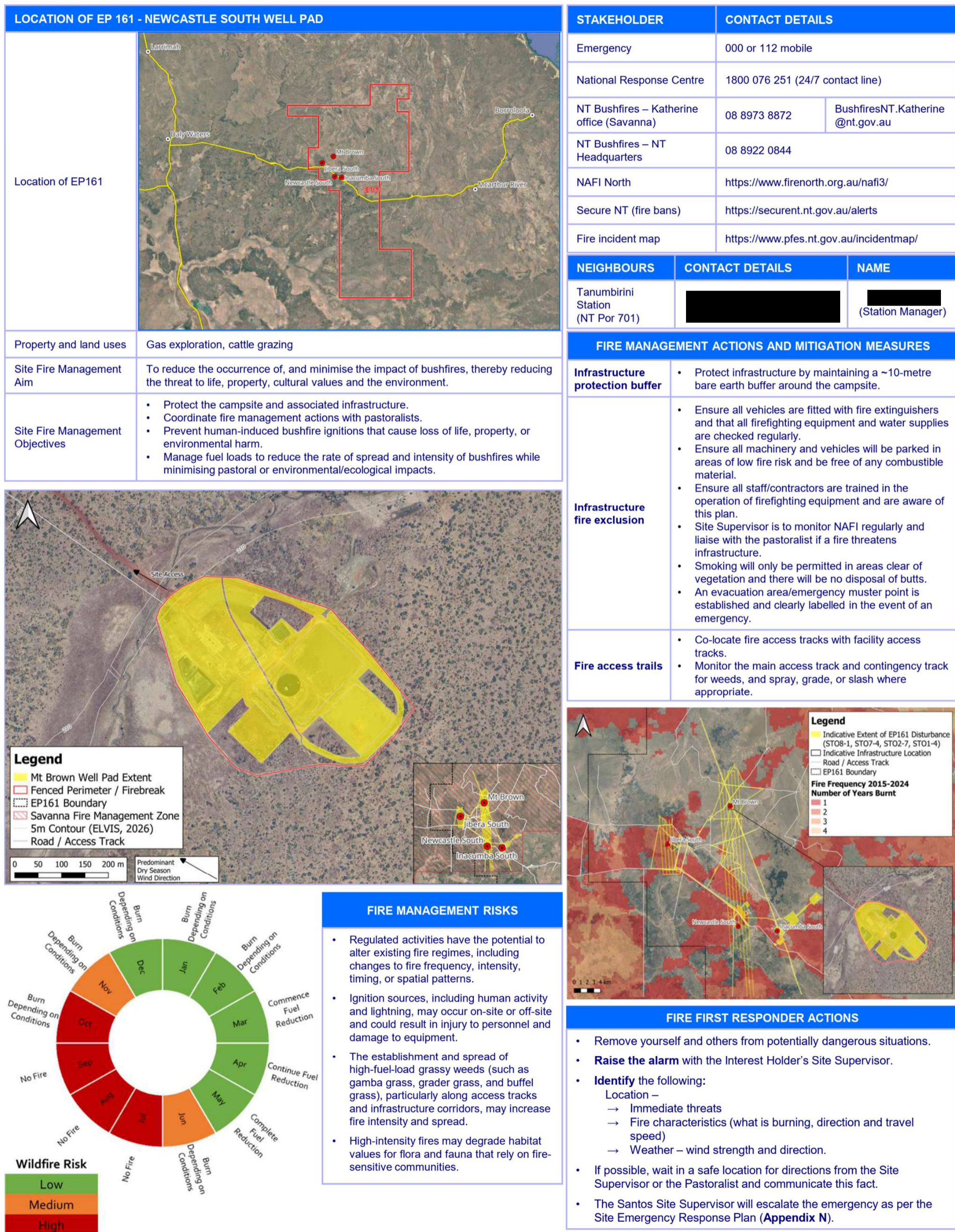


Figure 6: Fire management plan 1-Pager – Mt Brown Well Pad

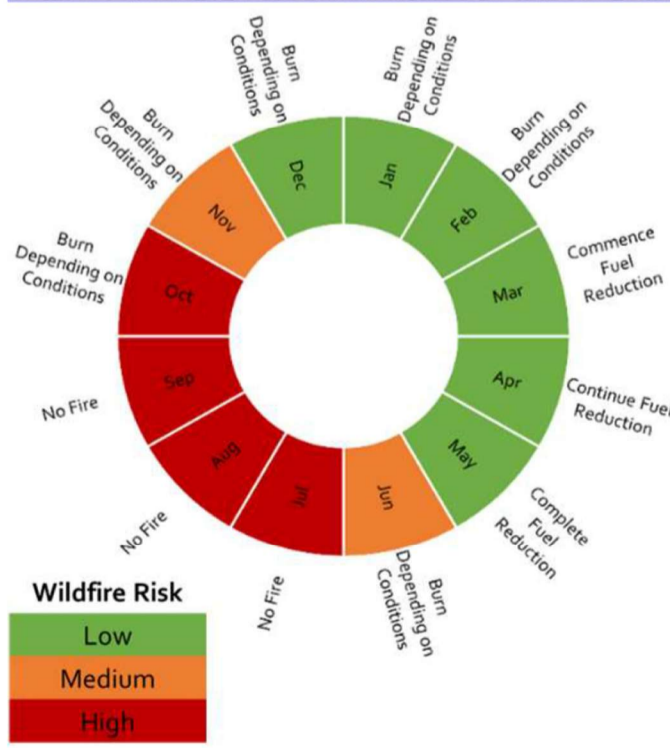
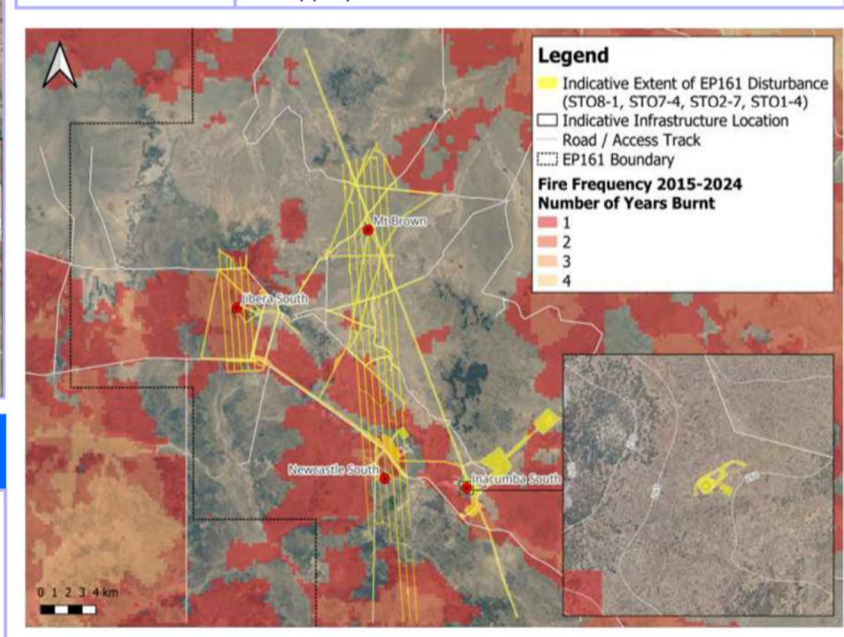
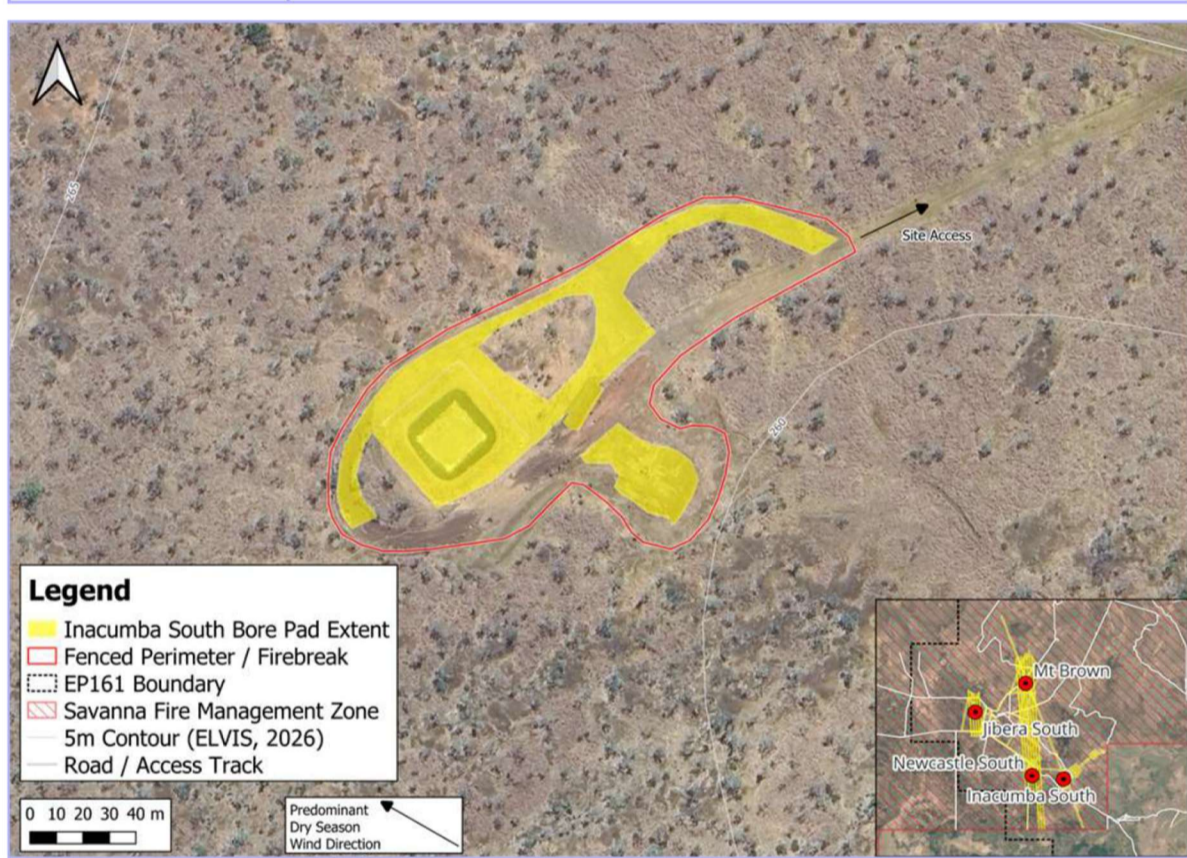
# Bushfire Management Plan – Inacumba South Bore Pad

LOCATION OF EP 161 - NEWCASTLE SOUTH WELL PAD	
Location of EP161	
Property and land uses	Gas exploration, cattle grazing
Site Fire Management Aim	To reduce the occurrence of, and minimise the impact of bushfires, thereby reducing the threat to life, property, cultural values and the environment.
Site Fire Management Objectives	<ul style="list-style-type: none"> <li>Protect the campsite and associated infrastructure.</li> <li>Coordinate fire management actions with pastoralists.</li> <li>Prevent human-induced bushfire ignitions that cause loss of life, property, or environmental harm.</li> <li>Manage fuel loads to reduce the rate of spread and intensity of bushfires while minimising pastoral or environmental/ecological impacts.</li> </ul>

STAKEHOLDER	CONTACT DETAILS
Emergency	000 or 112 mobile
National Response Centre	1800 076 251 (24/7 contact line)
NT Bushfires – Katherine office (Savanna)	08 8973 8872   BushfiresNT.Katherine@nt.gov.au
NT Bushfires – NT Headquarters	08 8922 0844
NAFI North	<a href="https://www.firenorth.org.au/nafi3/">https://www.firenorth.org.au/nafi3/</a>
Secure NT (fire bans)	<a href="https://securent.nt.gov.au/alerts">https://securent.nt.gov.au/alerts</a>
Fire incident map	<a href="https://www.pfes.nt.gov.au/incidentmap/">https://www.pfes.nt.gov.au/incidentmap/</a>

NEIGHBOURS	CONTACT DETAILS	NAME
Tanumbirini Station (NT Por 701)	[Redacted]	[Redacted] (Station Manager)

FIRE MANAGEMENT ACTIONS AND MITIGATION MEASURES	
<b>Infrastructure protection buffer</b>	<ul style="list-style-type: none"> <li>Protect infrastructure by maintaining a ~10-metre bare earth buffer around the campsite.</li> </ul>
<b>Infrastructure fire exclusion</b>	<ul style="list-style-type: none"> <li>Ensure all vehicles are fitted with fire extinguishers and that all firefighting equipment and water supplies are checked regularly.</li> <li>Ensure all machinery and vehicles will be parked in areas of low fire risk and be free of any combustible material.</li> <li>Ensure all staff/contractors are trained in the operation of firefighting equipment and are aware of this plan.</li> <li>Site Supervisor is to monitor NAFI regularly and liaise with the pastoralist if a fire threatens infrastructure.</li> <li>Smoking will only be permitted in areas clear of vegetation and there will be no disposal of butts.</li> <li>An evacuation area/emergency muster point is established and clearly labelled in the event of an emergency.</li> </ul>
<b>Fire access trails</b>	<ul style="list-style-type: none"> <li>Co-locate fire access tracks with facility access tracks.</li> <li>Monitor the main access track and contingency track for weeds, and spray, grade, or slash where appropriate.</li> </ul>



FIRE MANAGEMENT RISKS
<ul style="list-style-type: none"> <li>Regulated activities have the potential to alter existing fire regimes, including changes to fire frequency, intensity, timing, or spatial patterns.</li> <li>Ignition sources, including human activity and lightning, may occur on-site or off-site and could result in injury to personnel and damage to equipment.</li> <li>The establishment and spread of high-fuel-load grassy weeds (such as gamba grass, grader grass, and buffel grass), particularly along access tracks and infrastructure corridors, may increase fire intensity and spread.</li> <li>High-intensity fires may degrade habitat values for flora and fauna that rely on fire-sensitive communities.</li> </ul>

FIRE FIRST RESPONDER ACTIONS
<ul style="list-style-type: none"> <li>Remove yourself and others from potentially dangerous situations.</li> <li><b>Raise the alarm</b> with the Interest Holder's Site Supervisor.</li> <li><b>Identify</b> the following: <ul style="list-style-type: none"> <li>Location – <ul style="list-style-type: none"> <li>→ Immediate threats</li> <li>→ Fire characteristics (what is burning, direction and travel speed)</li> <li>→ Weather – wind strength and direction.</li> </ul> </li> </ul> </li> <li>If possible, wait in a safe location for directions from the Site Supervisor or the Pastoralist and communicate this fact.</li> <li>The Santos Site Supervisor will escalate the emergency as per the Site Emergency Response Plan (<b>Appendix N</b>).</li> </ul>

Figure 7: Fire management plan 1-Pager – Inacumba South Bore Pad

# Bushfire Management Plan – Inacumba North Well Pad

LOCATION OF EP 161 - NEWCASTLE SOUTH WELL PAD		STAKEHOLDER	CONTACT DETAILS	
Location of EP161		Emergency	000 or 112 mobile	
		National Response Centre	1800 076 251 (24/7 contact line)	
Property and land uses	Gas exploration, cattle grazing	NT Bushfires – Katherine office (Savanna)	08 8973 8872   BushfiresNT.Katherine@nt.gov.au	
Site Fire Management Aim	To reduce the occurrence of, and minimise the impact of bushfires, thereby reducing the threat to life, property, cultural values and the environment.	NT Bushfires – NT Headquarters	08 8922 0844	
Site Fire Management Objectives	<ul style="list-style-type: none"> <li>Protect the campsite and associated infrastructure.</li> <li>Coordinate fire management actions with pastoralists.</li> <li>Prevent human-induced bushfire ignitions that cause loss of life, property, or environmental harm.</li> <li>Manage fuel loads to reduce the rate of spread and intensity of bushfires while minimising pastoral or environmental/ecological impacts.</li> </ul>	NAFI North	<a href="https://www.firenorth.org.au/nafi3/">https://www.firenorth.org.au/nafi3/</a>	
		Secure NT (fire bans)	<a href="https://securent.nt.gov.au/alerts">https://securent.nt.gov.au/alerts</a>	
		Fire incident map	<a href="https://www.pfes.nt.gov.au/incidentmap/">https://www.pfes.nt.gov.au/incidentmap/</a>	
		NEIGHBOURS	CONTACT DETAILS	NAME
		Tanumbirini Station (NT Por 701)	[REDACTED]	[REDACTED] (Station Manager)
FIRE MANAGEMENT ACTIONS AND MITIGATION MEASURES				
<b>Infrastructure protection buffer</b>	<ul style="list-style-type: none"> <li>Protect infrastructure by maintaining a ~10-metre bare earth buffer around the campsite.</li> </ul>	<b>Infrastructure fire exclusion</b>	<ul style="list-style-type: none"> <li>Ensure all vehicles are fitted with fire extinguishers and that all firefighting equipment and water supplies are checked regularly.</li> <li>Ensure all machinery and vehicles will be parked in areas of low fire risk and be free of any combustible material.</li> <li>Ensure all staff/contractors are trained in the operation of firefighting equipment and are aware of this plan.</li> <li>Site Supervisor is to monitor NAFI regularly and liaise with the pastoralist if a fire threatens infrastructure.</li> <li>Smoking will only be permitted in areas clear of vegetation and there will be no disposal of butts.</li> <li>An evacuation area/emergency muster point is established and clearly labelled in the event of an emergency.</li> </ul>	
<b>Fire access trails</b>	<ul style="list-style-type: none"> <li>Co-locate fire access tracks with facility access tracks.</li> <li>Monitor the main access track and contingency track for weeds, and spray, grade, or slash where appropriate.</li> </ul>			

### FIRE MANAGEMENT RISKS

- Regulated activities have the potential to alter existing fire regimes, including changes to fire frequency, intensity, timing, or spatial patterns.
- Ignition sources, including human activity and lightning, may occur on-site or off-site and could result in injury to personnel and damage to equipment.
- The establishment and spread of high-fuel-load grassy weeds (such as gamba grass, grader grass, and buffel grass), particularly along access tracks and infrastructure corridors, may increase fire intensity and spread.
- High-intensity fires may degrade habitat values for flora and fauna that rely on fire-sensitive communities.

### FIRE FIRST RESPONDER ACTIONS

- Remove yourself and others from potentially dangerous situations.
- Raise the alarm** with the Interest Holder's Site Supervisor.
- Identify** the following:
  - Location –
    - Immediate threats
    - Fire characteristics (what is burning, direction and travel speed)
    - Weather – wind strength and direction.
- If possible, wait in a safe location for directions from the Site Supervisor or the Pastoralist and communicate this fact.
- The Santos Site Supervisor will escalate the emergency as per the Site Emergency Response Plan (**Appendix N**).

Figure 8: Fire management plan 1-Pager – Inacumba North Well Pad

# Bushfire Management Plan – Bennetts Bore Pad

LOCATION OF EP 161 - NEWCASTLE SOUTH WELL PAD		STAKEHOLDER	CONTACT DETAILS						
Location of EP161		Emergency	000 or 112 mobile						
		National Response Centre	1800 076 251 (24/7 contact line)						
		NT Bushfires – Katherine office (Savanna)	08 8973 8872   BushfiresNT.Katherine@nt.gov.au						
		NT Bushfires – NT Headquarters	08 8922 0844						
		NAFI North	<a href="https://www.firenorth.org.au/nafi3/">https://www.firenorth.org.au/nafi3/</a>						
Property and land uses	Gas exploration, cattle grazing	Secure NT (fire bans)	<a href="https://securent.nt.gov.au/alerts">https://securent.nt.gov.au/alerts</a>						
Site Fire Management Aim	To reduce the occurrence of, and minimise the impact of bushfires, thereby reducing the threat to life, property, cultural values and the environment.	Fire incident map	<a href="https://www.pfes.nt.gov.au/incidentmap/">https://www.pfes.nt.gov.au/incidentmap/</a>						
Site Fire Management Objectives	<ul style="list-style-type: none"> <li>Protect the bore pad and associated infrastructure.</li> <li>Coordinate fire management actions with pastoralists.</li> <li>Prevent human-induced bushfire ignitions that cause loss of life, property, or environmental harm.</li> <li>Manage fuel loads to reduce the rate of spread and intensity of bushfires while minimising pastoral or environmental/ecological impacts.</li> </ul>	<table border="1"> <thead> <tr> <th>NEIGHBOURS</th> <th>CONTACT DETAILS</th> <th>NAME</th> </tr> </thead> <tbody> <tr> <td>Tanumbirini Station (NT Por 701)</td> <td>[REDACTED]</td> <td>[REDACTED] (Station Manager)</td> </tr> </tbody> </table>		NEIGHBOURS	CONTACT DETAILS	NAME	Tanumbirini Station (NT Por 701)	[REDACTED]	[REDACTED] (Station Manager)
NEIGHBOURS	CONTACT DETAILS	NAME							
Tanumbirini Station (NT Por 701)	[REDACTED]	[REDACTED] (Station Manager)							
<b>FIRE MANAGEMENT ACTIONS AND MITIGATION MEASURES</b>									
<b>Infrastructure protection buffer</b>		<ul style="list-style-type: none"> <li>Protect infrastructure by maintaining a ~10-metre bare earth buffer around the bore.</li> </ul>							
<b>Infrastructure fire exclusion</b>		<ul style="list-style-type: none"> <li>Ensure all vehicles are fitted with fire extinguishers and that all firefighting equipment and water supplies are checked regularly.</li> <li>Ensure all machinery and vehicles will be parked in areas of low fire risk and be free of any combustible material.</li> <li>Ensure all staff/contractors are trained in the operation of firefighting equipment and are aware of this plan.</li> <li>Site Supervisor is to monitor NAFI regularly and liaise with the pastoralist if a fire threatens infrastructure.</li> <li>Smoking will only be permitted in areas clear of vegetation and there will be no disposal of butts.</li> <li>An evacuation area/emergency muster point is established and clearly labelled in the event of an emergency.</li> </ul>							
<b>Fire access trails</b>		<ul style="list-style-type: none"> <li>Co-locate fire access tracks with facility access tracks.</li> <li>Monitor the main access track and contingency track for weeds, and spray, grade, or slash where appropriate.</li> </ul>							
<p><b>Legend</b></p> <ul style="list-style-type: none"> <li>Bennetts Bore Pad Extent</li> <li>EP161 Boundary</li> <li>Savanna Fire Management Zone</li> <li>5m Contour (ELVIS, 2026)</li> <li>Road / Access Track</li> </ul> <p>0 10 20 30 40 m</p> <p>Predominant Dry Season Wind Direction</p>		<p><b>FIRE MANAGEMENT RISKS</b></p> <ul style="list-style-type: none"> <li>Regulated activities have the potential to alter existing fire regimes, including changes to fire frequency, intensity, timing, or spatial patterns.</li> <li>Ignition sources, including human activity and lightning, may occur on-site or off-site and could result in injury to personnel and damage to equipment.</li> <li>The establishment and spread of high-fuel-load grassy weeds (such as gamba grass, grader grass, and buffel grass), particularly along access tracks and infrastructure corridors, may increase fire intensity and spread.</li> <li>High-intensity fires may degrade habitat values for flora and fauna that rely on fire-sensitive communities.</li> </ul>							
<p><b>Wildfire Risk</b></p> <p>Low Medium High</p>		<p><b>FIRE FIRST RESPONDER ACTIONS</b></p> <ul style="list-style-type: none"> <li>Remove yourself and others from potentially dangerous situations.</li> <li><b>Raise the alarm</b> with the Interest Holder's Site Supervisor.</li> <li><b>Identify</b> the following: <ul style="list-style-type: none"> <li>Location – <ul style="list-style-type: none"> <li>→ Immediate threats</li> <li>→ Fire characteristics (what is burning, direction and travel speed)</li> <li>→ Weather – wind strength and direction.</li> </ul> </li> </ul> </li> <li>If possible, wait in a safe location for directions from the Site Supervisor or the Pastoralist and communicate this fact.</li> <li>The Santos Site Supervisor will escalate the emergency as per the Site Emergency Response Plan (<b>Appendix N</b>).</li> </ul>							

Figure 9: Fire management plan 1-Page – Bennetts Bore Pad

## 8. References

- DENR. (2020). *Bushfire Management Planning Guide: Onshore Petroleum Projects*. Retrieved from [https://depws.nt.gov.au/\\_\\_data/assets/pdf\\_file/0006/787488/bushfire-management-planning-guide.pdf](https://depws.nt.gov.au/__data/assets/pdf_file/0006/787488/bushfire-management-planning-guide.pdf)
- Department of Environment, P. &. (2023). *Savanna Regional Bushfire Management Plan*. Retrieved from [https://nt.gov.au/\\_media/docs/emergency-and-safety/bushfires/regional-bushfire-management-plan/savanna-regional-bushfire-management-plan.PDF](https://nt.gov.au/_media/docs/emergency-and-safety/bushfires/regional-bushfire-management-plan/savanna-regional-bushfire-management-plan.PDF)
- NAFI. (2025). *NT Infonet Reports. North Australia & Rangelands Fire Information*. Retrieved from <https://firenorth.org.au/nafi3/>