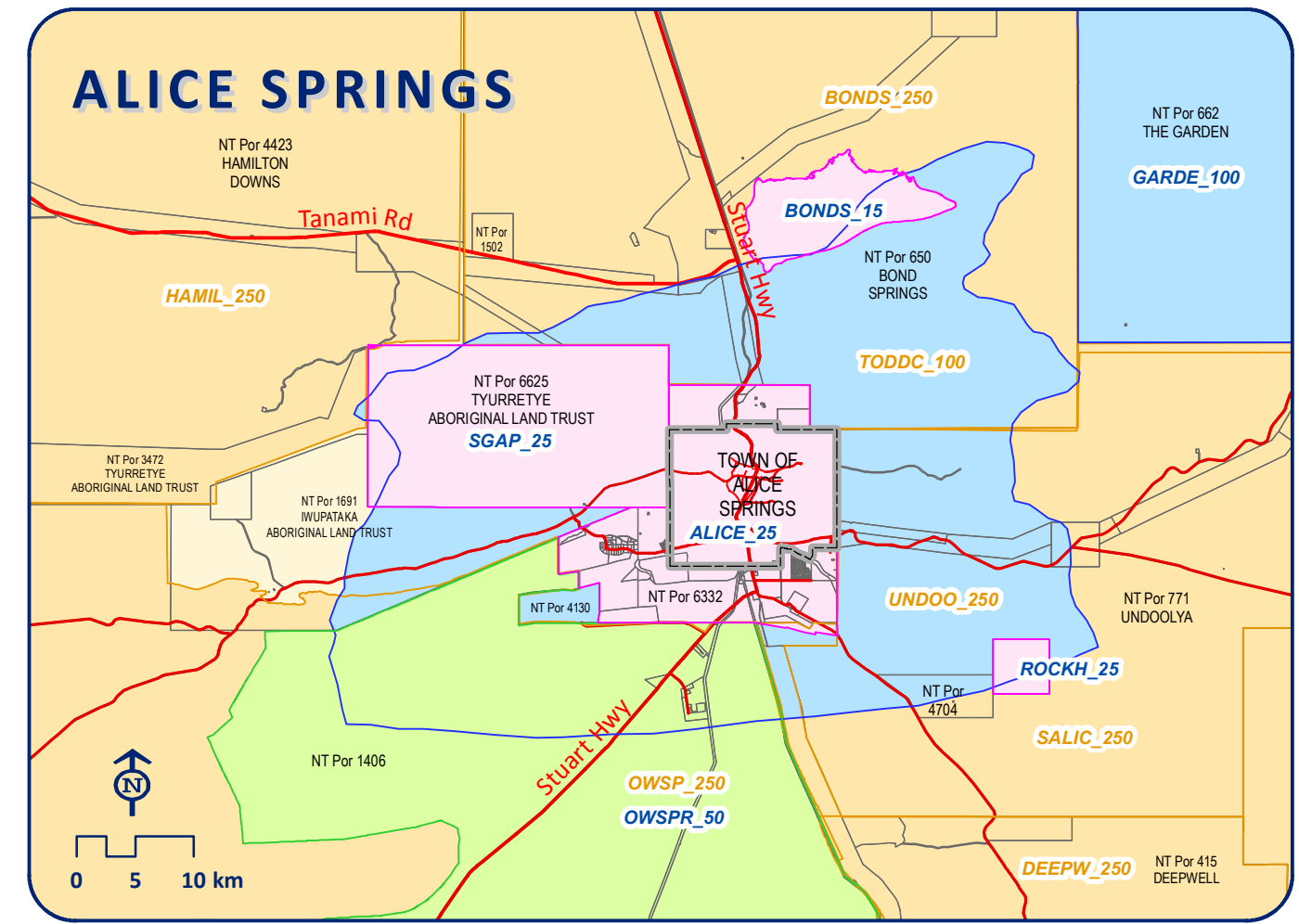
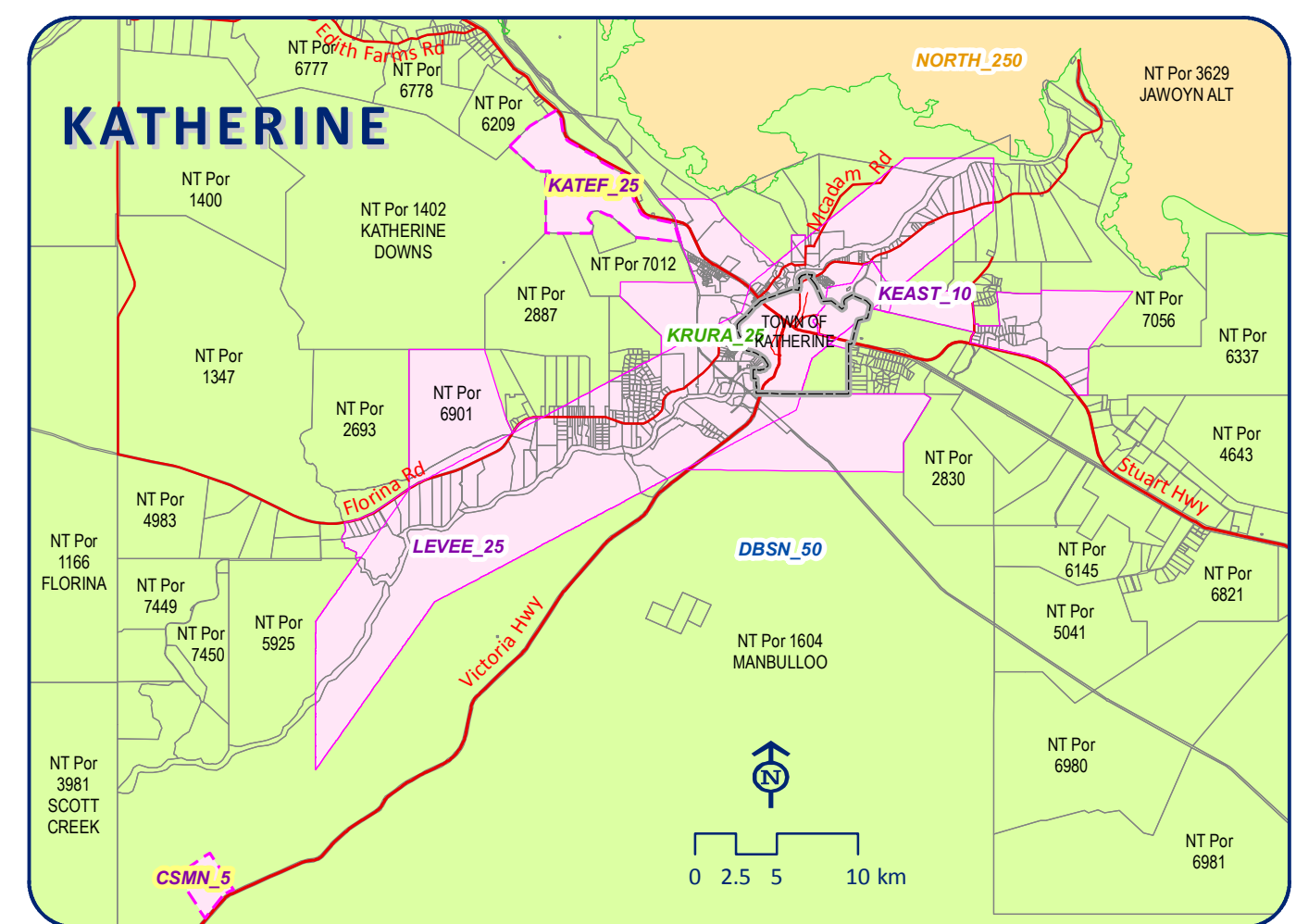
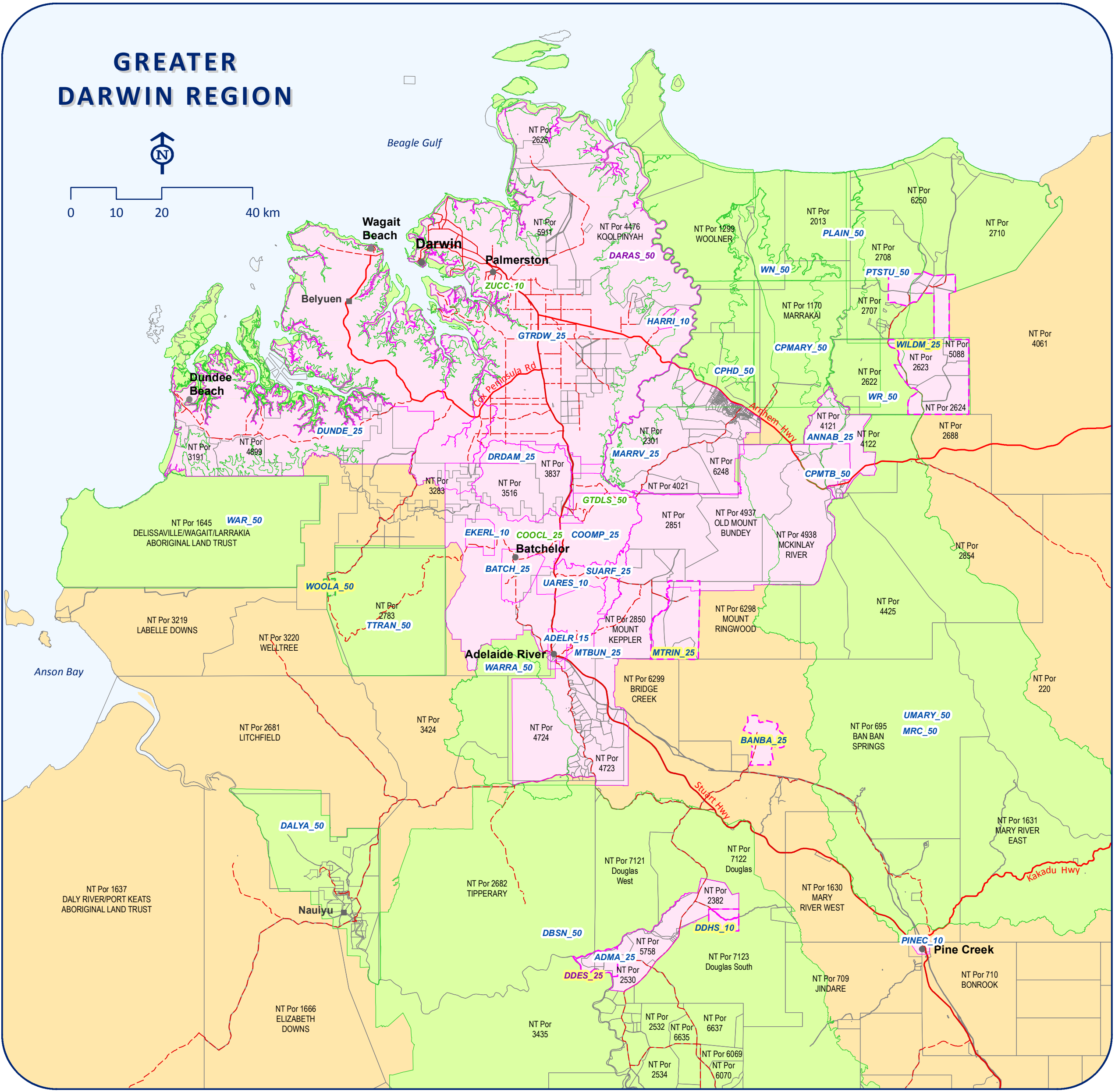
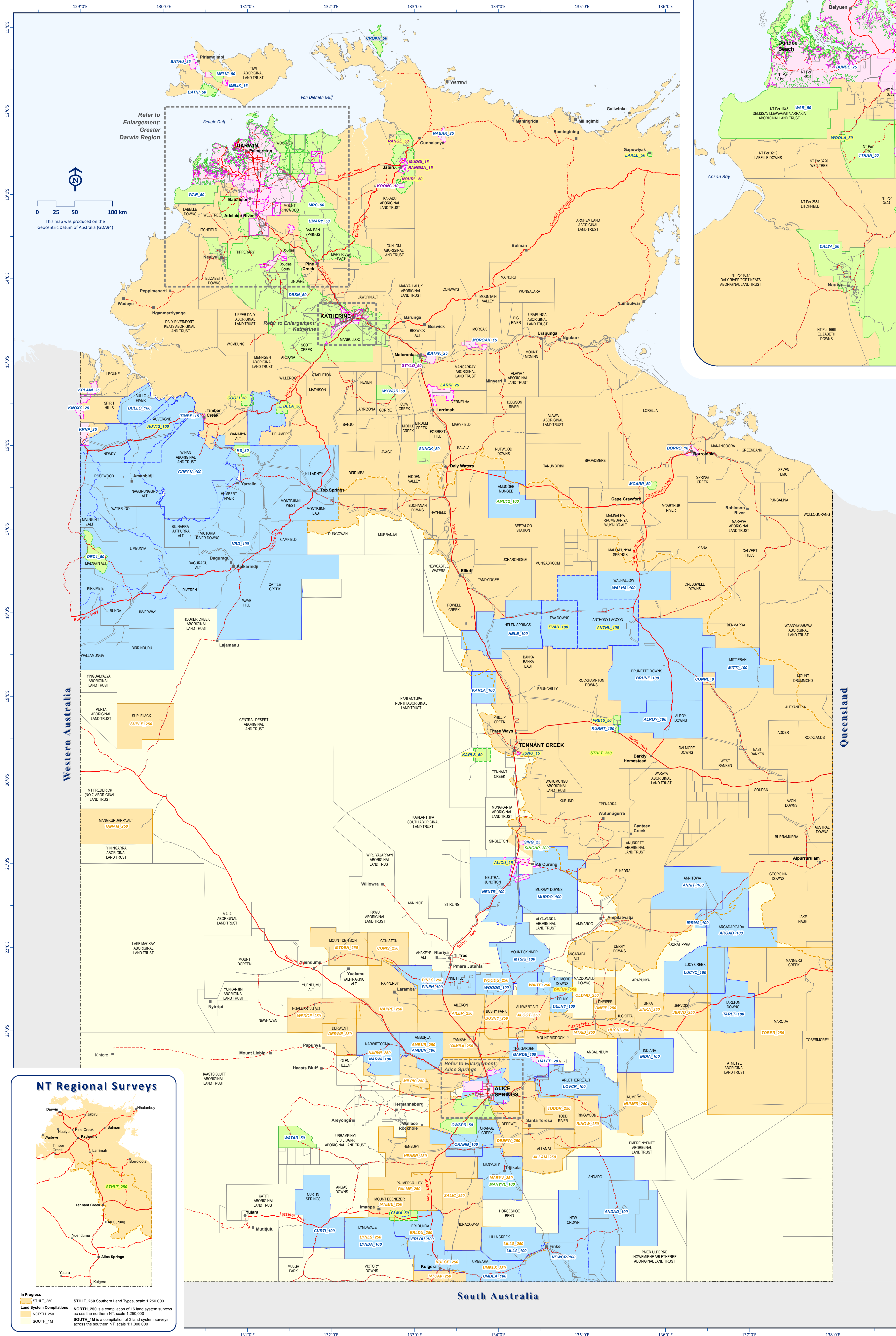


NORTHERN TERRITORY LAND RESOURCE SURVEYS

Mapping Status: 21st Dec 2015

For more information, contact:
 Manager, Land Assessment Unit,
 Department of Land Resource Management (DLRM)
 Coyler Centre, 25 Chung Wah Terrace, Palmerston, NT
 Phone: (08) 8999 4443
 Email: dlrm@nt.gov.au
 Website: www.nt.gov.au/land

© Northern Territory of Australia
 The Northern Territory of Australia does not warrant that the product, or any part of it, is correct or complete and will not be liable for any loss, damage or injury suffered by any person as a result of its inaccuracy or incompleteness. You are encouraged to notify any error or omission in the material using the contact details above.



LEGEND Surveys are displayed on this map in layers from broadest scale underneath to finest scale on top.

Survey Scale	Complete	Not Complete**	Survey Type and Code Display
1:5,000 - 25,000			Complete Not Complete**
1:30,000 - 50,000			Land Unit DBSN_50 ALICU_25
1:100,000			Soil Survey LEVEE_25 RANGE_50
1:200,000 - 250,000			Land System NORTH_250 DELNY_250
1:1,000,000*			Land Other COOCL_25 STHLT_250

* Remainder of the Northern Territory. These broad scale surveys and codes are not described on this map.

MORE INFORMATION ABOUT NT LAND RESOURCE SURVEYS

- This map displays the boundary extents of land resource surveys. Review the [Metadata](#) for details about this spatial dataset.
- About soil mapping in the NT and current projects. View a list of completed surveys [View a list of completed surveys](#)
- Use the DLRM web mapping application **NR MAPS NT** to review Land Resource survey details and to [download spatial data](#). Refer to the NR Maps User Guides <http://www.nt.gov.au/land/3mtrmap/>
- Technical reports for land resource surveys may be downloaded (pdf) from the [Northern Territory Library](#)

SURVEY CODE

This Department uses a Survey Code to identify each land resource survey. Example: **DBSN_50**

DBSN refers to the survey name "Land Resources of the Daly Basin"

_50 refers to the survey scale of 1:50,000

Surveys are grouped by 4 types; Land Systems, Land Units, Soil Surveys, and Other Land Surveys.

SURVEY STATUS DEFINITIONS

The survey status refers to the completion of land resource projects undertaken by the Land Assessment Unit.

The status definitions relate to the completion of:

- field survey work,
- the accompanying technical report,
- the final land resource data in a spatial data format, and
- an associated refined map product.

Each survey has been displayed on this map as either **Complete** or **Not Complete**.

COMPLETE

Complete (Spatial)
 Spatial data with legend, report and metadata completed
 A refined map product is also usually completed
 Spatial data is stored on the corporate spatial server
 Digital data products available for public use

NOT COMPLETE**

Complete (Not Spatial)
 Report is completed; maps may be included in the report
 Spatial data or refined digital map products have not been created
 Existing products available for public use

Survey In Progress
 Spatial data currently being edited or significant revision is planned
 Digital data products are NOT available for public use

